

# **Nordhavn 47 Acqua Dolce**



# **JMYS**

3010 Old Ranch Parkway, Suite 440, Seal Beach, CA 90740  
+1 949.355.4950 | [www.JMYS.com](http://www.JMYS.com)

Jeff Merrill Yacht Sales, Inc. | 3321 SE 14 Avenue | Fort Lauderdale, FL 33316



## ***ACQUA DOLCE***

**Asking: \$745,000.00 Location: Vero Beach, FL**

## **Nordhavn 47 *Acqua Dolce***

***Acqua Dolce*** is for sale by her third owners who purchased her in 2016 and have logged over 12,000 nautical miles to many incredible destinations. Today she is fueled and ready for you to start your own adventures. She is hull 23 in the series and has several key production improvements such as a 24V (original were 12V) system and a Luger wing engine (earlier hulls used Volvo or Yanmar).

***Acqua Dolce*** has many important popular factory options including: flybridge with aluminum framed top, fiberglass stack for the main engine exhaust and a crane for launching the dinghy and three cabin layout (divided forward cabin with bunkbeds outboard).

The Nordhavn 47 design is the largest “small boat” in the product line and she has the capability and range to reliably and comfortably serve as a long distance, ocean-crossing vessel. Very few yachts (sail or power) can compete with the capability of the Nordhavn 47 for comfort and reliability as a long distance, ocean-crossing vessel. Nordhavn 47 sisterships have crossed the Atlantic and Pacific oceans and it is considered routine to travel over 2,000 miles nonstop from port to port as dozens have done successfully. With over 50 hulls completed there are over one million miles traveled by Nordhavn 47s as reported in the PAE Distance Pennant Program. If you are a Nordhavn 47 buyer and been studying this PAE/Nordhavn model you will learn that ***Acqua Dolce*** is nicely outfitted and has been carefully maintained.

Her Luger main engine is keel cooled with a dry stack exhaust and she also has a Northern Lights generator. -With SidePower electric bow and stern thrusters she is very maneuverable at slow speeds making docking this single engine trawler less frantic. She also has ABT Trac active fin stabilizers for a smoother ride in rough seas.

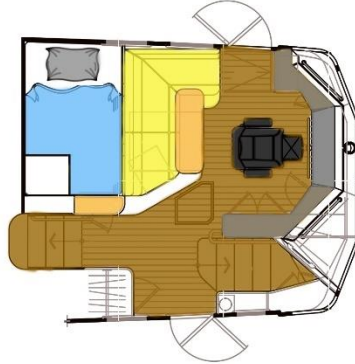
The interior of ***Acqua Dolce*** is teak with a satin finish. All living spaces are cooled by Marine Air reverse cycle air conditioning. Floors are tastefully carpeted completely covering and preserving the beautiful teak and spruce flooring throughout the boat. Decorator bedspreads and fabrics on all bunks that is coordinated with the window treatments and matching decorator throw pillows that will warm the heart of any first mate.

Her interior layout features a master stateroom aft with ensuite head and two cabins up front that share the forward head. The engine room has tall headroom, making her easier to move about, service, and perform inspections. Her raised pilothouse with flybridge above provides two ideal stations for operating underway. Boarding from the starboard side or swim platform you can easily walk around the decks. The aft cockpit opens up into a large saloon and galley. You go up a few steps to the pilothouse, which offers outdoor access port and starboard and you can descend a flight of stairs forward to arrive at the stateroom level. The engine room is accessible from a saloon floor hatch or through a large door in the master.

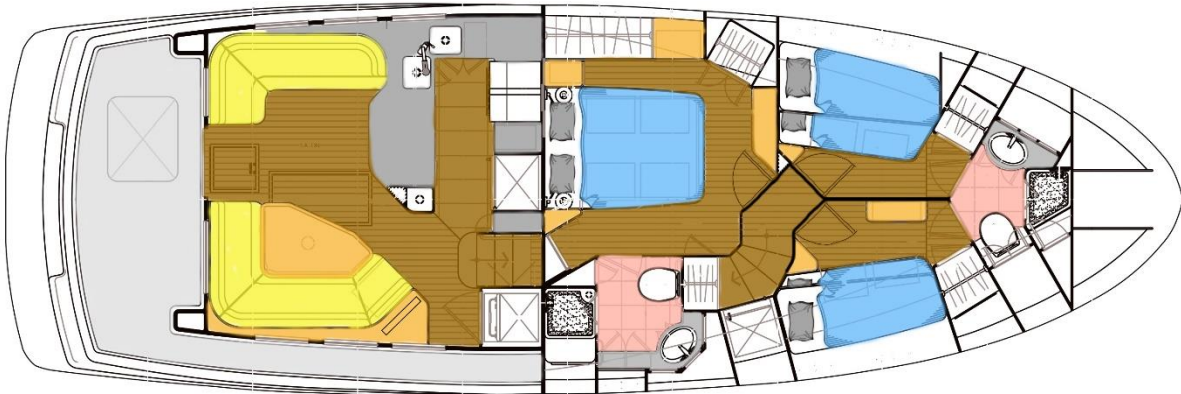
***Acqua Dolce*** has a convenient layout for an active owner operator couple. Her size is large enough to provide a comfortable ride with spacious accommodations, and she is ideally sized for ease of boat handling and maintenance.

# Nordhavn 47 Acqua Dolce

## LAYOUT: Upper Deck Pilothouse



## LAYOUT: Main Deck – Saloon, Galley, Staterooms



## Specifications:

<b>YACHT NAME:</b>	<i>Acqua Dolce</i>
<b>BRAND AND MODEL:</b>	NORDHAVN 47 (flybridge with Aluminum framed top)
<b>TYPE:</b>	Long range passage maker with raised pilothouse
<b>LOCATION:</b>	Vero Beach, FL
<b>MODEL YEAR:</b>	2004
<b>HULL NUMBER:</b>	23
<b>HULL COLOR:</b>	Gray gelcoat
<b>REGISTRY:</b>	United States Coast Guard documented
<b>DESIGNER:</b>	Jeff Leishman

## Nordhavn 47 Acqua Dolce

<b>BUILDER:</b>	P.A.E./South Coast – Xiamen, China
<b>HULL MATERIAL:</b>	Solid Fiberglass
<b>DISPLACEMENT:</b>	85,000 lbs.   38.56 MT
<b>BALLAST:</b>	6,000 lbs.   2,700 KG (Lead)
<b>RANGE:</b>	3,000 miles @ 7.8 knots
<b>SPEED:</b>	Cruise 7.1 knots. Top 9.0 knots
<b>LOA:</b>	51'   15.55 M
<b>LWL:</b>	47' 4"   14.43 M
<b>BEAM:</b>	16' 1"   4.9 M
<b>DRAFT:</b>	5' 6"   1.7 M
<b>D/L:</b>	450
<b>A/B:</b>	2.5:1
<b>Cp:</b>	Prismatic Coefficient .61
<b>AIR DRAFT:</b>	35'0"   10.67 M to top of antennae (estimate)
<b>DECK:</b>	White deck with gray nonskid
<b>MAIN ENGINE:</b>	Lugger   L1066 T   6 cylinder   174 HP (Main hours: ~3,200 May 2020)
<b>TRANSMISSION</b>	ZF W220   3.96:1 reduction transmission
<b>PROPELLER / SHAFT</b>	2.25" Aquamet 17 shaft   Four blade Nibral propeller 34" x 30"   Spurs line cutter
<b>EXHAUST:</b>	Main Dry stack, keel cooled   Wet exhaust on wing and generator
<b>WING ENGINE:</b>	Lugger   L844D.1 40 HP (Wing hours: ~62.0 May 2020)
<b>THRUSTER(S):</b>	SidePower 24V/10 HP Bow thruster   SidePower 24V/10 HP Stern thruster
<b>STABILIZATION:</b>	ABT 220 digital active fins
<b>ELECTRICAL:</b>	60 Hertz – US style - 50 Amp
<b>SHORE POWER:</b>	50 Amp for house and 50 Amp air con, 30 Amp house. (Foredeck connections). Olsen isolation transformer
<b>GENERATOR:</b>	Northern Lights 12 kW 240V 60Hz (Generator hours: ~3,320 May 2020)
<b>INVERTER/CHARGER:</b>	Xantrex SW 4024 4,000-Watt inverter / charger
<b>BATTERIES:</b>	(6) 8D Lifeline AGM House   (2) 4D Lifeline AGM Start batteries   (1) 4D AGM Trojan 12V Systems battery
<b>INTERIOR LIGHTING:</b>	Cantalupi lighting
<b>WATER MAKER:</b>	Village Marine Squirt SPW (600 gallons / day)
<b>CLIMATE CONTROL:</b>	Cruisair air conditioning (5) compressors - reverse cycle heat

## Nordhavn 47 Acqua Dolce

<b>MACHINERY EQUIPMENT:</b>	Reverso oil changer   Duplex Racor on main   Walbro fuel transfer pump
<b>WINDLASS:</b>	Maxwell VWC 3500 electric
<b>GROUND TACKLE:</b>	Bruce 50KG / 110lb.   400' 1/2" high test chain   Secondary Fortress
<b>CRANE:</b>	Aritex HSC-600 - 1,300 pound
<b>TENDER AND OUTBOARD:</b>	Caribe DL 12 RIB (2005)   Yamaha 40 HP outboard
<b>NAV/COM BRANDS:</b>	Garmin  Icom   Iridium   KVH   Airmar   Maretron   Raymarine
<b>ENTERTAINMENT:</b>	Samsung flat screen TV in saloon on lift   Sharp LCD flat screen TV in master   (2) Sharp LCD flat screen TV one in each guest cabin   KVH TracVision 4 Sat TV (subscription)   DirecTV (subscription)   Fusion MS-SRX400 sound system with Bose speaker   Air TV antenna   Rogue WiFi
<b>STATEROOMS   BERTHS:</b>	(3) Master aft. Two Guest cabins forward. Sleeps: (2) Master. (2) Guest port. (2) Guest starboard. (1) Pilothouse watch berth.
<b>BEDDING:</b>	Custom HMC mattress in master and guest staterooms
<b>HEADS:</b>	(2) Raritan Atlantes (24V electric, freshwater flush)
<b>SHOWERS:</b>	(2) Master and Guest
<b>LAUNDRY:</b>	GE Spacemaker separate clothes washer and clothes dryer
<b>GALLEY:</b>	General Electric Profile propane four burner stove with electric oven   SubZero refrigerator, freezer drawers   SubZero freezer in forward stairway   GE Dishwasher   GE Convection microwave oven   Broan Trash compactor
<b>INTERIOR WOOD:</b>	Teak. Matte, semi-gloss finish
<b>INTERIOR COUNTERS:</b>	Granite counters
<b>INTERIOR UPHOLSTERY:</b>	Sunbrella in Saloon and Ultraleather in Pilot House
<b>INTERIOR FLOORING:</b>	Teak and spruce hardwood
<b>BILGE PUMPS:</b>	(4) Total: (2) 24V electric Rule, (1) 24V Whale gulper and (1) Edson manual
<b>TANKAGE: (approx.)</b>	
<b>FUEL:</b>	1,470 gallons   5564.6 L (fiberglass)
<b>HOLDING BLACK:</b>	120 gallons   454.2 L (fiberglass)
<b>HOLDING GRAY:</b>	110 gallons   416.4 L (fiberglass)
<b>FRESH WATER:</b>	400 gallons   1514.2 L (fiberglass)
<b>ADDITIONAL EQUIPMENT:</b>	Stidd helm chair in pilothouse   Todd helm chairs on flybridge   Seaward 11-gallon hot water heater
<b>SAFETY:</b>	SeaFire fire suppression FE-241 in engine room and lazarette   Revere 6-person life raft   Lifesling  ACR 406 EPIRB   Marine medical kit
<b>PHOTO DATE:</b>	Most detail photos were taken in April, 2020
	<b>Note: All information is believed accurate, but should be verified.</b>

# Nordhavn 47 Acqua Dolce

## Description:

Swim Platform and Aft Deck: The swim platform with U-shaped rails makes for easy entry aboard either from the dock or the water using the fold down swim ladder. You can arrive by dinghy and hop aboard the swim step and through the transom door or walk on from the dock on the starboard side deck. Below the cockpit is a large lazarette, covered by a fiberglass hatch with gas shocks. A freshwater cockpit shower is conveniently located starboard of the Dutch door and the propane tank locker is aft to port. The covered starboard side deck is a protected walkway outside the saloon forward which provides ample space for moving fore and aft during docking maneuvers. New dock lines (2019), and towing bridle for dinghy for short transits between anchorages. LED Underwater lights (installed February 2019). The aft deck/cockpit provides an outdoor space for relaxing and boarding. You also have immediate access to the interior through her robust Dutch door.

Saloon: The saloon has comfortable bench seating outboard on both sides that is ideal for entertaining. There are custom window blinds that add décor and privacy. There is a large teak dining table by the starboard settee that will seat six for meals. On the back of the starboard side settee is a Samsung flat screen TV with Direct TV 1080p HD DVR incorporated with a lift system storing the TV when not in use. Also included is a Fusion MS-SRX400 Entertainment system with Bluetooth and WIFI playing through sub-woofer and Bose speakers for superior sound quality. For laundry aboard, a separate clothes washer and clothes dryer is concealed behind a louvered door forward to starboard just outboard of the stair way to the pilothouse.

Galley: The galley is at the forward end of the salon and offers large granite countertops that can be used for passing items to the saloon or as a breakfast bar. The galley is well laid out with ample storage. You will appreciate the double basin stainless steel sink, as well as plenty of drawers for utensils and overhead lockers for dish and glasses storage. The sole is teak and spruce with carpet to protect the finish. There is a generous assortment of appliances highlighted by the teak faced Sub-Zero refrigerator with freezer drawers. The galley features the following appliances:

- Sub-Zero TC700 refrigerator/freezer
- Two Sub-Zero Freezer drawers, one with icemaker
- 30" GE Profile gas cooktop with four burners
- 24" GE Profile electric oven
- GE Spacesaver dishwasher
- Storage lockers
- Xintex propane gas sensing system
- A second Sub-Zero freezer is located on the starboard side of the stairwell leading from the Pilothouse to the accommodations level
- Double sink
- Spice rack
- Broan 18" trash compactor
- GE clothes washer/dryer
- GE microwave convection oven

Pilothouse: Three steps lead up into the pilothouse from the companionway. The pilothouse includes the primary command stations and recently upgraded (2017 - 2018) electronics including; chart plotters with

## **Nordhavn 47 Acqua Dolce**

world map, AIS, radar, engine interface, and satellite communication for the vessel. This area provides a panoramic view of the boat and her surroundings. The overhead features newly replaced dark headliner for superior night vision. This raised pilothouse has a Stidd helm chair for skippering with a settee and teak table behind. Above the settee is a double day berth which keeps the crew close during overnight trips. The visibility is excellent, you are up high, forward and have clear sightlines forward. Nearly all of the nav/com has been refreshed during the current ownership tenure. Logical placement for easy operations of navigation/communication electronics, bow and stern thruster toggles, main and wing engine controls and panels for the inverter and generator. The electrical panel is installed in an island panel with clearly labeled breakers and digital read outs. Two Dutch doors open outboard to allow access to the Portuguese bridge deck – aft to port for the boat deck and flybridge and the starboard door provides entry to the foredeck or aft to the cockpit.

### **Navigation/Communications Electronics:**

- Garmin 17" GMM170 MFD Display with World Maps (2018)
- Garmin 7610Xsv MFD Display (2017)
- Garmin 1242Xsv MFD Display (2017)
- Garmin GMR Fantom 24" Radar (2017)
- Iridium-GO with external antenna
- Maretron NMEA engine data interface (2018)
- Maretron DSM250 Display (2018)
- EM-Trak Class A AIS (2018)
- ICOM M602 VHF radio (new antenna 2019)
- ICOM M506 VHF radio (2019)
- Engine Room camera system
- Airmar Weather Station (2018)
- Raymarine depth gauge
- Ritchie Powerdamp compass
- Side Power bow thruster 24V
- Side Power stern thruster 24V
- (2) Raymarine ST 6001+ autopilots
- Robertson Accusteer pump
- ABT TRAC stabilizer system 24V (fully serviced and new rams installed by ABT March 2019)
- Fusion 770 Stereo with Polk Audio Speakers (2019)
- TracVision C4 satellite
- HD Marine TV antenna (2019)
- Google WIFI (2019)
- Rouge Wave WIFI extender (2019)
- Xantrex Link Pro battery monitor
- One guest beamer spotlight
- Morse engine controls (two stations)
- Eartec wireless headsets
- Weems and Plath ship's clock

# Nordhavn 47 Acqua Dolce

Lower Level Landing: Going down a curved set of stairs you pass a built-in Sub-Zero freezer installed outboard and then reach the lower level landing where you can go forward to the guest cabins or aft to the master stateroom.

Master Stateroom and Head: The owner's stateroom is located aft from the stairway down into the accommodation area. The stateroom features a queen size island bed (fore and aft) with custom HMC mattress. There are ample drawers and lockers for storage as well as a large bookshelf. An LCD TV pre-wired for satellite, air antenna, and DVD player are mounted on the forward bulkhead. Raymarine depth gauge is next to master bed to allow monitoring throughout the night. The master has an incorporated head and shower and also provides immediate access to the engine room aft through a tall, well insulated and dogged door.

On the starboard side in the owner's stateroom is the doorway to the owner's head. It features a full-size shower finished in white FRP for easy cleaning. There is custom teak and spruce flooring. A granite countertop, white porcelain washbasin and Grohe mixer tap make for a comfortable space that is easy to clean.

Guest Staterooms and Head: The forward below decks area has two guest staterooms which are accessed via separate doors at the base of the stairway coming down from the pilothouse. There is a centerline bulkhead dividing this space into two separate areas. Each side has an upper berth with a wider lower berth. All four berths are fitted with luxury HMC custom mattresses. The starboard guest stateroom features a small chest of drawers. Ample storage through hanging lockers and under berth drawers is available in both cabins. Both staterooms have LCD TVs pre-wired for separate DVD players. Each cabin has its' own entry door aft and private access forward to the shared forward head and shower.

The head features a full shower and head with storage spaces. The vertical finish is white gelcoat fiberglass for easy cleaning. Like the master head, the counter is granite and the flooring is teak and spruce.

Engine Room: Access to the engine room is through the teak trimmed door in the master or through a small door in the lazarette. The impressive headroom in the engine room is readily apparent as soon as you enter making checks and maintenance more convenient. Primary access is through the teak trimmed door in the master. The Lugger main engine is keel cooled with dry stack exhaust. The aft section of the engine room has a Lugger wing engine to port and Northern Lights generator to starboard. Forward you have access to both active fin stabilizers. The fiberglass main fuel tanks outboard are plumbed to a forward supply tank with valves and manifolds to supply, return and transfer fuel. Ample space is provided for tools, oil, and spares. Equipment included in the engine room:

- Lugger L1066T 173HP main engine
- Lugger 24 V 844D 40HP wing engine
- Northern Lights 12kW generator 24 v (3304 hours – April 2020)
- Fireboy fire suppression system - old system removed and new system installed Dec. 2015 - new agent HFC – 227 (recertified in Dec 2019)
- Reverso oil change system



# Nordhavn 47 *Acqua Dolce*

- Racor duplex 900 fuel filter
- Racor 900 fuel transfer filter
- Racor 500 fuel filters for wing engine and generator (two separate)
- Tool chest with basic tools
- New house batteries (April 2018)
- Delta-T blowers (2019)
- Added third bilge pump for mid-water (2019)

Lazarette: Below the cockpit and through a large fiberglass hatch is the lazarette. Underway access is primarily conducted by entering aft through the engine room. The lazarette serves as a large storage cavern and here you find the house battery bank along with battery fuses and disconnects. *Acqua Dolce* has the optional higher capacity battery bank for a total of 1020AH at 24V. A 4kW Xantrex inverter provides power for all 120V appliances when the genset is not running. The Aritex crane controlling unit and hydraulic steering are installed. A Village Marine Squirt SPW – 600 watermaker, with upgraded control interface (2018) and new membranes installed January 2020, provides more than adequate fresh water for long stays in remote locations. The lazarette is also protected with a Fireboy built-in fire suppression system.

Portuguese Bridge: The Portuguese bridge divides the pilothouse from the foredeck and creates a very safe forward through passage. It connects aft on the port side and up to the boat deck. There is a foredeck door on the starboard side. There are portlights built into the guest stateroom and outside storage lockers incorporated for easy access of gear stowage.

Foredeck: The foredeck has a fiberglass door entry from the Portuguese bridge as well as port and starboard boarding gates all leading to a very level deck surface, making it easier to move about. The foredeck is kept clear for anchoring duties using the Maxwell VWC 3500 windlass along with 110 lb. Bruce anchor connected to 400' of 3/8" chain. The chain locker is accessed through a Freeman hatch built into the self-draining anchor well. Aboard is a spare Fortress anchor. Lifelines on the bow were upgraded (2018). A 10% boost transformer (2017) is also included for marinas with low voltage. Shore power connections are located on the foredeck.

Boat Deck: The boat deck is aft of the flybridge and is where the tender is stowed and launched using the Aritex 1400 lb. stainless steel davit (overhauled February 2020). The 12.5 ft. Caribe tender with 40HP Yamaha 4-stroke motor (fully serviced (February 2020) are mounted on the starboard side of the boat deck which leaves plenty of room for sunbathing or entertaining. A self-launching Revere 6-person life raft in a custom holder is positioned on the aft deck (installed new April 2018).

Flybridge: Up a short set of steps you arrive at the flybridge which is one of the best places to entertain while underway or at rest. The best view is from the two matching Todd helm chairs. There is also a wide settee aft. The flybridge is sheltered from the sun by an aluminum frame covered with stretched Stamoid fabric. Key equipment features include:

- Morse main engine controls
- Guest Beamer spotlight control
- Garmin 7610 MFD (2017)

# Nordhavn 47 *Acqua Dolce*

- Garmin 740 S MFD
- ICOM 602 VHF radio
- Compass
- Side Power bow and stern thruster controls
- Trac stabilizer control
- New P70 R Raymarine autopilot unit (flybridge controller)
- Maxwell windlass control
- JL Stereo Speakers

***Acqua Dolce*** has been continually refined, proactively maintained and pampered with exceptional care and appears much younger than her true age in years.

**Detailed maintenance records confirming pride of ownership are available for review by request\*.**

You can read all about the cruising accomplishments of the Nordhavn 47 on the internet by studying reviews and owner blogs. The detail photos of ***Acqua Dolce*** were taken in April of 2020 (many more images are available by request- [contact the listing brokers\\*](#)).

**For additional information please visit the *Acqua Dolce* website, [www.Nordhavn47forsale.com](http://www.Nordhavn47forsale.com)**

**Exclusions:** Potential purchasers should assume that items on the vessel at the time of viewing, but not specifically listed on this sheet, are not included with the sale of the yacht. These specifications are believed to be true and correct but cannot be guaranteed. Items excluded include, but are not limited to Paintings, tools, handheld nav gear, binoculars and mermaid wall hanging in saloon. Owner's personal effects and clothing will be removed prior to closing.

**Disclaimer:** Jeff Merrill Yacht Sales, Inc. presents the details of this vessel in good faith but cannot guarantee or warrant the accuracy of this information nor guarantee or warrant the condition of the vessel. Buyers should instruct their agents and their surveyors to investigate all details the buyers desire validated. This vessel is offered subject to prior sale, price change, or withdrawal without notice.

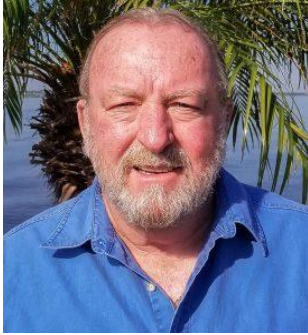
**Brokerage:** JMYS is a US based (licensed and bonded yacht brokerage in California and Florida) with an international emphasis specializing in ocean capable trawlers. Our brokers are experienced boaters, most are trawler owner/operators with thousands of hours and miles at sea. We treat our clients with respect, we are responsive and not pushy. Our focus is to become your loyal advocate, always looking out for your best interests. The team at JMYS has extensive trawler and motor yacht product knowledge and our skills are available for coaching after the sale has concluded.

**Co-Brokerage:** Fellow yacht broker association members: This listing is available for co-brokerage and JMYS is a 50/50 house. Courtesy showings are available by appointment. Florida listings subject to appropriate broker licensing required by law.

**Photos, images and descriptive content are copyrighted by JMYS and may not be copied or used without specific written permission. This listing specification has been approved by the sellers for accuracy. All inspections are by appointment only.**

# Nordhavn 47 Acqua Dolce

**\*Listing broker. John Hoffman** (licensed Florida Yacht broker) has extensive product knowledge of the trawler market and is the former Nordhavn commissioning manager in Florida so his product knowledge of this brand is exceptional. Please contact co-listing broker, **John Hoffman** by phone, text or email for additional information or to schedule your personal showing. John is available via Mobile +1.772.215.3720 (call or text). You can send a detailed Email to: [John@JMYS.com](mailto:John@JMYS.com).



**Licensed and Bonded in Florida**

International Yacht Brokers Association (Florida)  
Yacht Brokers Association of America

**\*Listing broker. Jeff Merrill, CPYB** (Certified Professional Yacht Broker) has extensive product knowledge of the trawler market plus intimate knowledge of the Nordhavn 47 including being involved with several new builds and multiple brokerage transactions. Jeff is a familiar face to YouTube viewers. Please contact co-listing broker, **Jeff Merrill, CPYB** by phone, text or email for additional information or to schedule your personal showing. Jeff is always available via Mobile +1 .949.355.4950 (call or text). You can send a detailed Email to: [Jeff@JMYS.com](mailto:Jeff@JMYS.com).



**Licensed and Bonded in California and Florida**

Skype: jeff.merrill | You Tube: Jeff Merrill Yachts | Twitter: @merrillyachts | LinkedIn: jeff.merrill  
Facebook: Jeff Merrill Yacht Sales | Instagram: jeffmerrilljmys | Yacht Brokers Association of America |  
International Yacht Brokers Association (Florida) | Northwest Yacht Brokers Association |  
California Yacht Brokers Association – President 2015 and 2016 Association



Jeff Merrill Yacht Sales, Inc. © 2020 All Rights Reserved [www.JMYS.com](http://www.JMYS.com)