

Nordhavn 60 Paradise Found



JMYS

Jeff Merrill Yacht Sales, Inc. | www.JMYS.com
3010 Old Ranch Parkway, Suite 440 | Seal Beach, CA 90740

Florida address: Jeff Merrill Yacht Sales, Inc. | 3321 S.E. 14th Avenue | Ft. Lauderdale, FL 33316



Paradise Found

Price: \$1,699,000.00
Location: Seattle, WA

Nordhavn 60 Paradise Found

INTRODUCTION:

Her name appropriately describes the vessel and the experience, ***Paradise Found*** having securely toured two different owner couples up and down the US west coast in comfort, safety, and style. Jeff Merrill was involved with this build from the start, working with the original owners to place their order, helping them to create a very well thought out, personalized 60. Jeff's experience getting aboard and reviewing multiple new and used sisterships (55 and 60) with his trained eyes to look for the best features and selections, led to many improvements, both subtle and significant. Many of these upgraded touches are revealed in this video.

Being a later hull in the series, she has an improved layout. The entry level features an open saloon with large windows connecting to the galley which then transitions into the owner cabin. One of the best improvements was the creation of the VIP island berth stateroom forward.

The interior has traditional vertical grain teak with a honey color that has aged harmoniously. There are edge bound carpets protecting the teak and spruce soles and a rich dark granite was installed on the counters. Additional décor touches like the shade of the upholstery and color of the curtains show off her warm and luxurious accommodations.

There are two staterooms, each with a private head and shower, along with a captain's cabin and day head in the pilothouse provide plenty of sleeping accommodations. The saloon has a settee to port with a large teak fixed table opposite two Ekornes recliner chairs and the flat screen television is on a built-in lift. The galley is well supplied for preparing and serving meals. The raised pilothouse is controlled via a comfortable Stidd helm chair with all necessary navigation and communication in sight and reach. Below the forward guest stateroom is a large basement. Taking the stairs down from the entry level you arrive in the utility room with top load freezer and laundry appliances. The engine room has enough height that you can lean over a bit to get to both Luggers, as you head aft to the lazarette (water maker, batteries and air conditioning units) you pass the Northern Lights generator.

On deck, a level foredeck with easily deployed ground tackle is backed by the Portuguese bridge. You can travel to the aft deck along the starboard side or visit the boat deck to port. The dinghy is a 12' AB aluminum bottom rigid inflatable with steering seat and console launched from the Steelhead crane. Up top, the flybridge has a fiberglass Bimini top, two helm chairs and bench seating with a table.

Redundancy is an essential component of any passage maker and as reliable as a single with wing can be, it will not compare with twin Lugger mains. The directional stability is greatly improved with the two skegs on either side of the keel and the addition of bow and stern thruster make close quarter handling nimble and less stressful.

Paradise Found is practical, logical, flows well and presents as elegant in an understated manner

Redundancy is an essential component of any passage maker and as reliable as a single with wing can be, it will not compare with twin Lugger mains. The directional stability is greatly improved with the two skegs on either side of the keel and the inclusion of ABT TRAC stabilizers reduces rolling at sea. The installation of bow and stern thrusters, in conjunction with the twin mains, makes close quarter handling nimble and less stressful.

Nordhavn 60 Paradise Found

Traveling afloat on a well-appointed, high-end, and custom crafted house that can travel anywhere with deep water is one of the most compelling aspects of owning a Nordhavn 60 like **Paradise Found**.

SPECIFICATIONS:	
YACHT NAME:	PARADISE FOUND
BRAND AND MODEL:	Nordhavn 60
TYPE:	Long range raised pilothouse trawler yacht with flybridge
LOCATION:	Seattle, WA
MODEL YEAR:	2010
HULL NUMBER:	49
HULL COLOR:	White gelcoat - blue stripe
DECK:	White deck with gray nonskid (gelcoat)
REGISTRY:	United States Coast Guard documented
DESIGNER:	Jeff Leishman
BUILDER:	South Coast - Xiamen, China
HULL MATERIAL:	Solid fiberglass
DISPLACEMENT:	138,000 lbs. 62.60 MT
BALLAST:	8,500 lb 3.17 MT (Lead)
SPEED:	Cruise 8.25 knots, Top 9.5 knots
RANGE:	3,000 miles @ 8.25 knots
LOA:	62'6" 19.05 M
LWL:	57' 3" 17.45 M
BEAM:	18' 0" 5.49 M
DRAFT:	6' 8" 2.03 M
AIR DRAFT:	Approximately 31' 9.45 M waterline to anchor light.
A/B RATIO:	2.47:1
ENGINES:	(2) Luger model L1066T 170 BHP@ 2,500 RPM (Hours~ 2,600 April 2021) (4) ZF Mathers control stations
TRANSMISSIONS:	TwinDisc Model MG5075A transmissions with 2.88:1 reduction gear
PROPELLER / SHAFT	2" Aquamet 17 shaft 5 blade 29 x 20.5 bronze propellers PSS shaft seals
MAIN EXHAUST:	Wet exhaust
THRUSTERS:	SidePower 24V/15 HP Bow thruster SidePower 24V/15 HP Stern Thruster
STABILIZATION:	ABT 250 digital active fins At anchor flopper stopper on port side
STEERING:	Pilothouse and flybridge helms Hynautic hydraulic Emergency tiller

Nordhavn 60 Paradise Found

ELECTRICAL:	60 Hertz – US style – 50-amp
SHORE POWER:	50-amp for house and air con, 30-amp house foredeck Glendinning house 50-amp aft Charles smart boost
GENERATOR:	Northern Lights 20 kW Model M8443 240V 60Hz (Generator hours: ~2,300) April 2021
INVERTER/CHARGER:	Xantrex/Trace SW 4024 4,000-Watt inverter/charger Inverter by-pass MasterVolt 24/100-3 charger Xantrex 12V Trucharge communications battery charger
BATTERIES:	Lifeline AGM 24V (8) 8-4 house bank (4) 4-D main engine start batteries (2) Group 31 generator start batteries (1) Group 31 12V for communications
INTERIOR LIGHTING:	Mostly LED lighting
CLIMATE CONTROL:	Cruisair reverse cycle HVAC with four compressors and approximately 160,000 BTU Axman-Anderson diesel hydronic furnace
MACHINERY EQUIPMENT:	Reverso oil changer Racor duplex for mains Walbro fuel transfer pump with Racor filter Headhunter Mach 5 fresh water pump with Groco accumulator tank Olsun isolation transformer 12 KVA
WINDLASS:	Maxwell VWC 3500 vertical electric windlass
GROUND TACKLE:	170 LB. Nordhavn plow anchor 400' 1/2" HT chain Secondary Manson 15kg claw anchor stowed in lazarette
CRANE:	Steelhead ES1500 - 1,500-pound max capacity
TENDER AND OUTBOARD:	AB 12 DLX CL310 12' inflatable dinghy with seat and steering console 40 HP Evinrude E-Tec outboard
NAV/COM BRANDS:	Furuno Simrad Icom FLIR
ENTERTAINMENT:	(2) Toshiba flat screen televisions - saloon on lift and guest cabin Bose stereo and speakers DirecTV receiver
STATEROOMS:	(3) Master aft, VIP forward, Captain's in pilothouse
WATER MAKER:	Village Marine Tec Squirt Model SPW-600 = 600 gallons/day
HEADS:	(3) Tecma (electric freshwater)
HOT WATER:	Torrid MV40-2, 40-gallon water heater
SHOWERS:	Three: Stand up in owner head with door Stand up in guest head with bi-fold door Cockpit shower
LAUNDRY:	Bosch separate clothes washer and clothes dryer

Nordhavn 60 Paradise Found

GALLEY:	GE Propane stove with electric oven SubZero upright refrigerator, freezer drawers Top load freezer in Utility room Dishwasher GE Convection microwave oven Trash compactor Garbage disposal Miele electric grill aft deck
INTERIOR WOOD:	Teak with vertical grain
INTERIOR COUNTERS:	Granite counters
INTERIOR UPHOLSTERY:	Ultraleather
INTERIOR FLOORING:	Teak and Holly hardwood throughout (covered with carpet)
BILGE PUMPS:	Three: (1) Jabsco electric, (1) Rule 3700 electric high water bilge pump (both electric pumps have Ultra Senior float switches) (1) Edson manual
TANKAGE: (approx.)	
FUEL:	2,375 gallons 8,990 L (fiberglass) (5) fiberglass tanks, (1) aluminum supply reservoir. Forward port, center, starboard. Engine room port and starboard.
HOLDING BLACK:	120 gallons 454 L (1) fiberglass tank
HOLDING GRAY:	110 gallons 416 L (1) fiberglass tank
FRESH WATER:	600 gallons 2,271 L (1) fiberglass tank
SAFETY:	Sea-Fire engine room and lazarette fire suppression system USCG safety package EPIRB Switlik 6-person MD2 life raft (expired) High water bilge pump and alarm Aqualarm bilge counter Smoke and CO alarms Water in fuel alarm
PHOTO DATE:	Most photos taken March 2021
Note: All information is believed accurate but should be verified. Some details from PAE manuals.	

Layout: Raised Pilothouse – Day Head and Captain’s Cabin

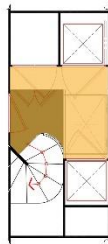


Nordhavn 60 Paradise Found

Layout: Main Deck – Saloon, Galley, Staterooms and Heads



Layout: Lower Deck – Utility Room Fronting Engine Room



The Nordhavn 60 is a full displacement trawler designed for safe ocean crossing, extended coastal passages and remote cruising. The twin engine design has many advantages, one being that she steers truer, and the duplicity of propulsion packages simplifies spares and servicing.

Foremost she is a solid fiberglass, very heavily built long range trawler. Her heft will carry her through the roughest of seas and her construction is robust and built to last.

Nordhavns are famous for their rugged capabilities with many commercial vessel attributes. The systems and engineering are well thought out, refined, and have benefited from decades of building cruising vessels.

One thing that sets Paradise Found apart is her interior layout and finish. She was ordered with excellent selections and she has been maintained to her owners extremely high standards.

The photos and video will give you the best view of the interior layout.

Pilothouse equipment, primarily navigation and communication gear, summarized here:

Nordhavn 60 Paradise Found

Pilothouse	Brand and model
Helm	Stainless steel destroyer wheel
Chair	Stidd helm chair
VHF	IC M604 with mic control and hailer
Autopilot	Simrad AP 50 with FU 50 jog lever
Radar	(2) Furuno - open array and dome
Depth	Furuno split screen
Chart plotter	Furuno NavNet 3D black box
Monitors	(3) Furuno large displays
GPS	Furuno GP32 GPS WAAS Navigator
Wind	Furuno FI-50 digital and analog
Compass	Furuno Satellite Compass
Compass	Ritchie - with Nordhavn card
AIS	Furuno AIS
Repeater	Furuno FI-50 Multi
Computer	Dell
Main engine - Port	Lugger with Morse digital display
Main engine - Starboard	Lugger with Morse digital display
Engine controls	MMC Single base dual lever controls
Thruster (s)	Side Power dual lever toggle controls
Hand hold command	Side Power thruster hand held control
Entertainment	IPOD docking station
Nav/Com Entertainment	Installation layout drawings from Alcom
Windlass	Maxwell AA560 digital chain counter
Stabilizers	TRAC digital stabilizer panel
Generator	Northern Lights display
Inverter panel	Xantrex display
Water maker remote	Village Marine
Chart light	Mounted
Chart drawer	Under table
Search Light	ARC digital point pad controller
FLIR	Remote control pad. Image displayed on monitor
CCTV	Several remote viewing cameras
Intercom	Phone style room to room talking
Wipers	Control pad
Horn	Push button
Bilge pump	Aqualarm Digital counter
Gray water	Dometic light bars with key
Black water	Dometic light bars with key
Fresh water	Analog tank level display
Network switch	Extron CPM 101
Fans	(2) Hella

Nordhavn 60 Paradise Found

Fire Suppression	Sea Fire display for engine room and lazarette
iPad stand	Ram EZ- RollR stand (no iPad included)
Alarm - water in fuel	Racor alarm
Alarm - high bilge water	Ultra Safety Systems high water bilge alarm

Paradise Found is hull number 49 of the Nordhavn 55/60 series. This series, which includes the Nordhavn 63, all originate from the same hull mold. The 60 and 63 have the aft portion extended to lengthen the waterline, streamline the profile and this provides a larger aft deck with corresponding lazarette. One of the first 60's built; she is also a twin engine model with comparable range to the single engine dry exhaust version offered as the standard machinery package.

P.A.E. has created over 500 long range trawlers and this offshore experience has led to many improvements over time. By 2010 they had sailed their 40 around the world, delivered a fleet of trawlers across the Atlantic to prove their leadership with ocean crossing trawlers. The 55/60/63 series combined have produced over 100 hulls clearly this size and capability is the most successful design in company history.

The current market of trawler buyers exceeds the limited selection of good boats available. Finding a boat to serve as the platform for your adventures involves many factors; equipment, location and appearance...all of which need to be centered by budget. Seeing this Nordhavn 60 in person will prove to you the care and attention that has been continuously bestowed with affection and appreciation.

ADDITIONAL BROKER COMMENTS:

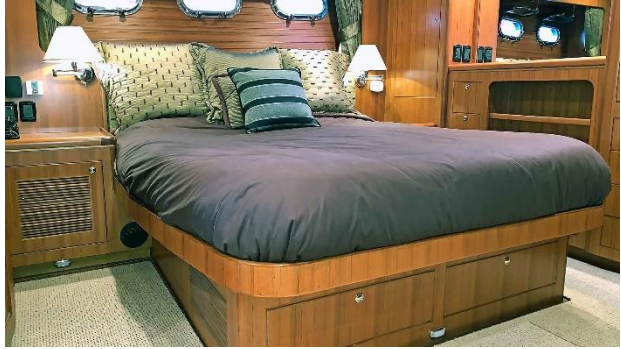
Paradise Found is a US Coast Guard Documented vessel. **Paradise Found** has been exceptionally well looked after from day one, operated on a regular basis and patiently awaits her next trip offshore.



<https://www.youtube.com/watch?v=WuhaazBEE3w>

Jeff Merrill Yacht Sales, Inc. © 2021 All Rights Reserved www.JMYS.com

Nordhavn 60 Paradise Found



For additional information please visit **Paradise Found's** website: www.Nordhavn60ForSale.com

Exclusions: Potential purchasers should assume that items on the vessel at the time of viewing, but not specifically listed on this sheet, are not included with the sale of the yacht. These specifications are believed to be true and correct but cannot be guaranteed. Items excluded include, but are not limited to Paintings, tools, handheld nav gear and binoculars. Owner's personal effects and clothing will be removed prior to closing.

Disclaimer: Jeff Merrill Yacht Sales, Inc. presents the details of this vessel in good faith but cannot guarantee or warrant the accuracy of this information nor guarantee or warrant the condition of the vessel. Buyers should instruct their agents and their surveyors to investigate all details the buyers desire validated. This vessel is offered subject to prior sale, price change, or withdrawal without notice.

Brokerage: JMYS is a US based (licensed and bonded yacht brokerage in California, Florida and Washington) with an international emphasis specializing in ocean capable trawlers and recreational tugs. Our brokers are experienced boaters, most are trawler owner/operators with thousands of hours and miles at sea. We treat our clients with respect, we are responsive and not pushy. Our focus is to become your loyal advocate, always looking out for your best interests. The team at JMYS has extensive trawler and motor yacht product knowledge and our skills are available for coaching after the sale has concluded.

Co-Brokerage: Fellow yacht broker association members: **Paradise Found** is available for Co-Brokerage.

Nordhavn 60 Paradise Found

***Listing broker. Jeff Merrill, CPYB** (Certified Professional Yacht Broker) has extensive product knowledge of the trawler market plus direct experience with the Nordhavn 43. He helped clients build several new 43's (Taiwan and China) during his 14 years with PAE and continues to be active in the Nordhavn brokerage market. Jeff is a familiar face to YouTube viewers and a regular presenter at TrawlerFest. He writes about trawlers for *Ocean Navigator* and *PassageMaker* magazines and is one of the online instructors for Boaters University.

This listing specification has been approved by the sellers for accuracy. The photos, images and descriptive content are copyrighted by JMYS and may not be copied or used without specific written permission. All inspections are by appointment only. Please contact listing broker, **Jeff Merrill, CPYB** by phone, text or email for additional information or to schedule your personal showing. Jeff is always available via Mobile (949) 355-4950 (call or text). You can send a detailed Email to: Jeff@JMYS.com.



Licensed and Bonded in California, Florida and Washington.

Skype: jeff.merrill | You Tube: Jeff Merrill Yachts | Twitter: @merrillyachts | LinkedIn: jeff.merrill
Facebook: Jeff Merrill Yacht Sales | Instagram: jeffmerrilljmys | Yacht Brokers Association of America |
International Yacht Brokers Association (Florida) | Northwest Yacht Brokers Association |
California Yacht Brokers Association – President 2015 and 2016

