

Nordic Tug 42 Flybridge, Fog Dog



JMYS

Jeff Merrill Yacht Sales, Inc. | www.JMYS.com
4153 Country Club Drive | Long Beach, CA 90807

Florida address: Jeff Merrill Yacht Sales, Inc. | 3321 S.E. 14th Avenue | Ft. Lauderdale, FL 33316



Fog Dog

Price: \$449,000.00 Location: Vero Beach, FL

Nordic Tug 42 Flybridge, Fog Dog

Being owned by a retired and distinguished US Navy Captain, **Fog Dog** is ready to meet your coastal cruising needs. With her distinct build heritage to working tug boats, her hull shape is well known among trawler enthusiasts as being hardy, strong, and elegant through the water.

Fog Dog is a 2004 model and hull number 57. The 42 Flybridge is widely considered one of Nordic Tug's most sought after models. Her layout affords both owners and guests alike to remain comfortable while underway and at rest. Lots of interior upgrades have been done to revitalize her living spaces. She is powered by a Cummins 450 HP diesel engine and easily navigated around docks with both a bow and stern thruster.

Accommodations and Layout:

COCKPIT:

Stepping from the dock and onto **Fog Dog's** aft swim platform, you may gain access to her cockpit via a transom boarding gate. Upon entering her spacious cockpit, you are greeted by a cozy, multipurpose space complete with a Weber Grill and custom mounting station. High safety rails work to keep you and your guests safe while enjoying this space. Port side of the 'house', a ships ladder goes up to the upper boat deck and flybridge. On either side of the house, side decks provide walkways to the pilot house and foredeck.

- Pair of teak lounge chairs
- Teak folding table
- Weber propane grill
- Transom boarding door

SALOON:

From the cockpit and through a weather tight door, you enter the saloon. **Fog Dog's** saloon has received upgrades under her current owner to modernize her feel. The original carpet has been replaced with teak and holly wood flooring that has been double insulated to reduce engine room noise and temperature. To starboard, the L-shaped settee features updated leather upholstery, and modified back supports to grant a more comfortable posture when sitting. To port and aft, a built-in entertainment system featuring a Vizio 32" flat screen TV, and stereo controls. To starboard, a single barrel back club chair offers an additional space for lounging. Large windows open for maximum airflow and viewing pleasure. The living quarters below, galley, and pilot house are all entered from the saloon.

- 32" Vizio TV
- L-shaped settee (off white leather upholstery)
- Single barrel back club chair
- Varnished oak table
- Teak & Holly flooring

Nordic Tug 42 Flybridge, Fog Dog

GALLEY:

With a galley up layout, cooking aboard **Fog Dog** is a pleasure as you are not isolated from your crew. The galley is situated forward and to starboard of the saloon space. Corian counters make for a clean surface for all food prep needs.

- Double stainless steel basin sink
- Princess electric 3 burner stove with oven
- NovaKool fridge/freezer combo
- Sharp microwave

PILOT HOUSE:

Fog Dog's pilot house is a wonderful place to spend your days cruising comfortably. A variety of Raymarine digital navigation, including autopilot, afford the operator detailed charts and info of the water ahead and below. Morse electronic engine controls, bow thruster, stern thruster, and a large helm wheel all serve **Fog Dog's** operator for easy maneuvering. Behind the pilot house helm and raised above the floor level, there is a settee with table for crew. The pilot house has doors to both port and starboard, granting access to the side decks.

- Raymarine Axiom Pro 12" chartplotter
- Raymarine Axiom+ 9" chartplotter
- Raymarine autopilot
- Raymarine radar
- Morse digital engine controls
- Side Power bow thruster controls
- Side Power stern thruster controls
- Ultra-Leather settee

GUEST STATEROOM:

Fog Dog's guest stateroom to port is a simple, yet effective layout. Situated on the port side of the vessel with outside viewing through two portlights, it features a single berth that doubles as a sitting settee. Storage comes in the fashion of four drawers, a book nook, and four small closets. Twin wall mounted reading lights and overhead lighting keep the area well lit.

- Twin portlights
- Twin wall mounted reading lights
- Overhead lighting
- Four separate closets

GUEST HEAD:

Across the hall of the guest stateroom and to starboard is the separate guest head. A Dometic Vacu-Flush head sees to all sanitation duties. The guest head is also outfitted with a stand-up shower. The countertop is corian.

- Stand-up shower

Nordic Tug 42 Flybridge, Fog Dog

- Dometic Vacu-Flush head (freshwater)
- Single portlight
- Single basin stainless steel sink
- Corian countertop

OWNER STATEROOM:

The owner stateroom is quite large for this class of vessel. Tall overhead ceilings, and ample walking room make this a very roomy space. The island bed is of a queen size and very comfortable. A total of three portlights and a single overhead hatch do a wonderful job of capturing the breeze. This airflow helps to keep ambient room temperatures down while overnighting away from the dock. Storage is abundant here and designed to meet most needs.

- Island queen berth
- Vast storage
- Two portlights in the bow
- One portlight in the foredeck
- One overhead hatch
- LG 24" flatscreen TV

OWNER HEAD:

Conjoined with the owner stateroom, there is the private owner head. The owner's head features the same comforts as the guest head, only in a larger layout.

- Corian countertop
- Oblong stainless steel sink
- Large standup shower
- Dometic Vacu-Flush head (freshwater)
- Single portlight to port

ENGINE ROOM:

Fog Dog's engine room is nestled below the saloon. A powerful, 450HP Cummins 6CTA 8.3-M3 engine propels *Fog Dog* at 8 knots cruise speed and up to 13 knots at full throttle. Battery boxes, hot water tank, air conditioning systems, and sanitation systems are all housed in the engine room. The generator on board is an Onan 11.5kW MDKAW. This generator packs a punch and can power most 120V systems while cruising or on anchor.

- 450HP Cummins 6CTA 8.3-M3
- 20-gallon hot water tank
- PSS dripless shaft seal
- Battery boxes
- Onan 11.5kW MDKAW generator

Lazarette:

Nordic Tug 42 Flybridge, Fog Dog

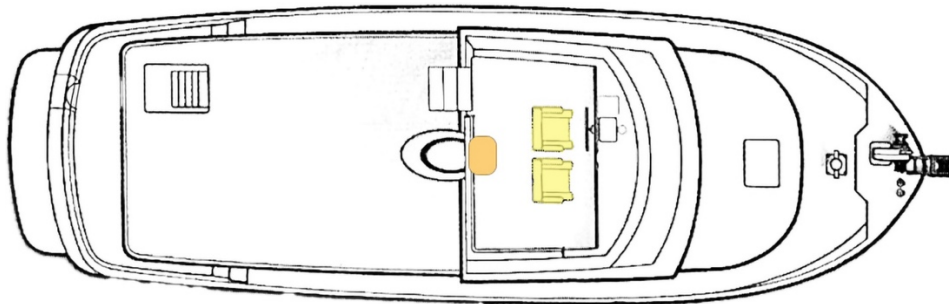
Affectionately referred to on most yachts as the ship's "garage" is **Fog Dog's**, lazarette. Accessed from a hatch in the cockpit, it is here that most owners store items such as fishing poles, various fluids, water accessories, and anything else not suited for the interior living spaces. Also, within the lazarette is the ship's steering system, water tank, and stern thruster mechanics.

- Rudder and steering ram access
- Side-Power stern thruster
- Stern thruster battery with separate charger
- Water tank with access to pumps

Upper Deck and Flybridge:

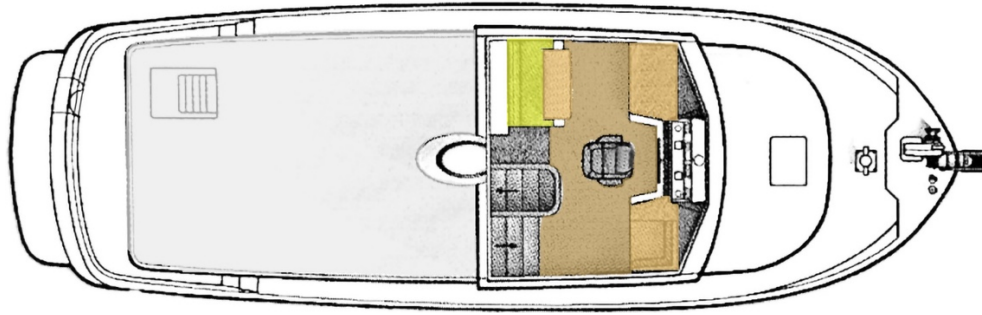
The upper deck and flybridge are accessed via a ship's ladder in the aft cockpit. Tall safety rails line the edges of the upper boat deck to help prevent accidents. The dinghy is an 8' AB with a 15HP Yamaha outboard, that rests on custom chocks to the starboard side of the boat deck. The dinghy is raised with a heavy-duty Steelhead crane. A few short steps up the port side is the flybridge. The flybridge is shaded by a canvas Bimini, with comfortable seating for a captain and co-captain at the helm. A wonderful feature of **Fog Dog** is her ability to stow away her vital navigational electronics to the port side of the helm via a closing and hidden "electronics box". This helps to protect the enclosed units from the weather.

- Raymarine 9" Axiom+ Chartplotter
- Morse digital engine controls
- Destroyer helm wheel
- Raymarine autopilot - **INOPERABLE**
- Side Power bow and stern thruster controls
- Windlass controls
- Compass
- Two Todd helm chairs
- Teak cocktail table

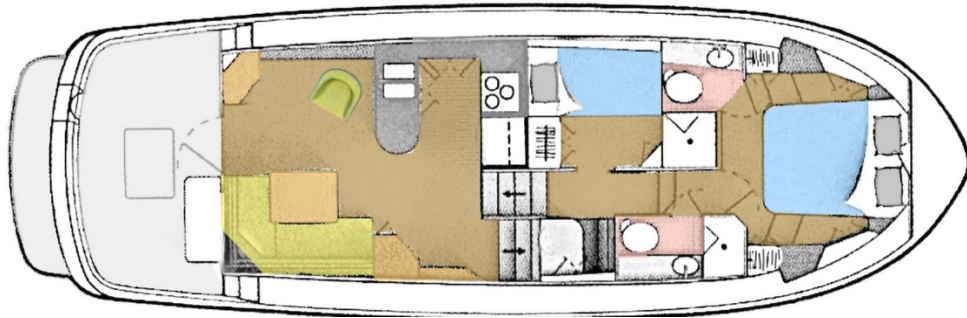


FLYBRIDGE LAYOUT

Nordic Tug 42 Flybridge, *Fog Dog*



PILOTHOUSE



MAIN DECK – SALOON, GALLEY, AND STATEROOMS

SPECIFICATIONS:	
YACHT NAME:	<i>Fog Dog</i>
BRAND AND MODEL:	Nordic Tug 42
TYPE:	Semi-displacement trawler
LOCATION:	Vero Beach, FL
MODEL YEAR:	2004
HULL NUMBER:	57
HULL COLOR:	White
DECK:	White
REGISTRY:	USCG
DESIGNER:	Lynn Senour
BUILDER:	Nordic Tugs Inc. Burlington, Washington
HULL MATERIAL:	FRP
DISPLACEMENT:	33,100 lbs.
SPEED:	8 knots cruise 13 knots max
RANGE:	1,300 nautical miles at 8 knots (Approximate)
LOA:	44'8" 13.6M
LWL:	38'4" 11.68M

Nordic Tug 42 Flybridge, Fog Dog

BEAM:	13'10" 4.22M
DRAFT:	4'7" 1.4M
AIR DRAFT:	22'4" (6.70M) mast up 15'4" (4.5M) mast down. (Approximate)
ENGINE:	Cummins 6CTA 8.3-M3 450 HP (~1,984 hours February 2023)
TRANSMISSION:	Twin Disc MG5075
PROPELLER / SHAFT:	28 x 30 four-blade bronze 2" Stainless steel
MAIN EXHAUST:	Wet
THRUSTER(S):	Side Power 15 HP bow and stern
ELECTRICAL:	120VAC 50 amp 12VDC
SHORE POWER:	Fore and Aft inlet 50 amp
GENERATOR:	Onan MDKAW 11.5kW (~491 hours February 2023)
INVERTER/CHARGER:	Victron 3000W
BATTERIES:	(6) 6V flooded house (1) each 8D gel for thrusters
INTERIOR LIGHTING:	12VDC overhead LED and halogen
CLIMATE CONTROL:	Technicold 12K BTU Technicold 16K BTU Dometic 16K BTU
MACHINERY EQUIPMENT:	Racor fuel filters Reverso oil change
WINDLASS:	Lofrans Tigre 1200W
GROUND TACKLE:	Rocna 25kg 5/16" chain
CRANE:	Steelhead WD800
TENDER AND OUTBOARD:	AB 10VS 15HP Yamaha tiller
NAV/COM BRANDS:	Raymarine
ENTERTAINMENT:	Vizio 32" TV LG 24" TV Kenwood stereo
STATEROOMS:	Queen Owner Twin Guest
BEDDING:	Custom mattress for owner
HEAD(S):	(2) Dometic Vacu-flush freshwater
HOT WATER:	20 gallons
SHOWERS:	(2) stand up stalls with glass doors
LAUNDRY:	Prewired and plumbed
GALLEY APPLIANCES:	NovaKool fridge and freezer Princess electric three burner stove and oven
INTERIOR WOOD:	Teak
INTERIOR COUNTERS:	Corian
INTERIOR UPHOLSTERY:	Ultra-leather
INTERIOR FLOORING:	Teak and holly in salon Carpet throughout
TANKAGE: (approx.)	
FUEL:	500 gallons 1892 liters
HOLDING BLACK:	45 gallons 170 liters
FRESH WATER:	200 gallons 757 liters
BILGE PUMPS:	3 electric bilge pumps

Nordic Tug 42 Flybridge, Fog Dog

SAFETY:	EPIRB USCG safety requirements
PHOTO DATE:	January 2023
Note: All information is believed accurate, but should be verified	

SUMMARY:

Fog Dog is reluctantly being passed on to new, loving owners. Her current owners have spent many years at sea and have now decided to live a new life on land. She has provided many amazing memories for both friends and family alike, just as she will for you.

Nordic Tug 42 *Fog Dog* 360 Tour



<https://360trawlerspin.com/tours/fogdog/index.htm>



Nordic Tug 42 Flybridge, Fog Dog



Exclusions: Potential purchasers should assume that items on the vessel at the time of viewing, but not specifically listed on this sheet, are not included with the sale of the yacht. These specifications are believed to be true and correct but cannot be guaranteed. Items excluded include, but are not limited to paintings, tools, handheld nav gear and binoculars. Owner's personal effects and clothing will be removed prior to closing.

Disclaimer: Jeff Merrill Yacht Sales, Inc. presents the details of this vessel in good faith but cannot guarantee or warrant the accuracy of this information nor guarantee or warrant the condition of the vessel. Buyers should instruct their agents and their surveyors to investigate all details the buyers desire validated. This vessel is offered subject to prior sale, price change, or withdrawal without notice.

Brokerage: JMYS is a US based (licensed and bonded yacht brokerage in California, Florida and Washington) with an international emphasis specializing in ocean capable trawlers. Our brokers are experienced boaters, most are trawler owner/operators with thousands of hours and miles at sea. We treat our clients with respect, we are responsive and not pushy. Our focus is to become your loyal advocate, always looking out for your best interests. The team at JMYS has extensive trawler and motor yacht product knowledge and our skills are available for coaching after the sale has concluded.

Co-Brokerage: Fellow yacht broker association members: This listing is available for co-brokerage and JMYS is a 50/50 house. Courtesy showings are available by appointment. Florida listings subject to appropriate broker licensing required by law.



Please contact listing broker, **Mark Pittman**, by phone, text or email for additional information or to schedule your personal showing. Mark is available via Mobile + 1 803.320.3586 (call or text). You can send a detailed email to: Mark@JMYS.com.

Nordic Tug 42 Flybridge, Fog Dog



Please contact listing broker, **John Hoffman**, by phone, text or email for additional information or to schedule your personal showing. John is available via Mobile + 1 772.215.3720 (call or text). You can send a detailed email to: John@JMYS.com.