

Nordhavn 50 Grey Goose



JMYS

Jeff Merrill Yacht Sales, Inc. | www.JMYS.com
4153 Country Club Drive | Long Beach, CA 90807

Florida address: Jeff Merrill Yacht Sales, Inc. | 2650 W State Road 84, Suite 103 | Ft. Lauderdale, FL 33312



Grey Goose

Price: \$549,000.00 Location: Vero Beach, FL

Nordhavn 50 Grey Goose

YACHT NAME:	<i>Grey Goose</i>
BRAND AND MODEL:	Nordhavn 50
TYPE:	Long range passage maker with raised pilothouse
LOCATION:	Vero Beach, FL
STATEROOMS:	(2) Owner mid Guest forward
SALOON -DECKS	Widebody with starboard side deck walkway
HEADS:	(2) Raritan macerating freshwater head (2) Stall showers
MODEL YEAR:	2000
HULL NUMBER:	11
HULL COLOR:	Light Gray Awlgrip
REGISTRY:	United States Coast Guard documented
DESIGNER:	Jeff Leishman
BUILDER:	P.A.E./South Coast Taipei, Taiwan ROC
HULL MATERIAL:	Solid Fiberglass
DISPLACEMENT:	85,000 lbs. 38.56 MT
BALLAST:	7,300 lbs. 3.31 MT (Lead)
SPEED:	Cruise 8 knots. Top 10.0 knots
RANGE:	3,000 miles @ 7.0 knots
LOA:	50'6" 15.39 M
LWL:	44' 5.5" 13.6 M
BEAM:	16' 4.9 M
DRAFT:	5' 8" 1.6 M
D/L:	450
A/B:	2.3:1
Cp:	Prismatic Coefficient .61
AIR DRAFT:	26 fixed antenna
DECK:	White deck with gray nonskid
MAIN ENGINE:	Lugger L6108A2 250 HP Turbo charged, after cooled (Main hours: ~8,805 June 2024)
TRANSMISSION	ZF 3.0:1 reduction Mathers MMC 9110 electric control
SHAFT / PROPELLER	2.25" Aquamet 22 shaft 34" x 32" four blade bronze propeller Evolution line cutter on main
EXHAUST:	Keel cooled dry stack exhaust
WING ENGINE:	Yanmar 3GM30F 40 HP WOT (HOURS: NA)
WING TRANSMISSION	Kanzaki KM3V 2.61 ratio
WING SHAFT / PROPELLER	Morse control cables 1.25" Aquamet 22 shaft Martec 2-blade folding propeller
THRUSTERS:	ABT 24V 10 HP Bow Thruster Side Power 12V 8.4 HP Stern thruster

Nordhavn 50 Grey Goose

STABILIZATION:	Naiad 252 active fins Hydraulic oil reservoir in engine room
ELECTRICAL:	60 Hertz – US style - 50-Amp House (12V) 890aH (24V) 440aH 890-watt 12v solar array 410-watt 24v solar array
SHORE POWER:	Foredeck 50-Amp House 240V AC 50-Amp Air conditioning 240V AC Miscellaneous shore power cords and connectors
GENERATOR:	Northern Lights 12 kW 240V AC 60Hz (Generator hours: ~4,630 June 2024)
INVERTER/CHARGER:	Sinewave Trace SW2512 inverter Victron BMV-712 SMART
BATTERIES:	House: (8) 12V group 31 Firefly AGM Main start: (2)24V group 31 Odyssey Extreme AGM Generator and Wing start: (1) 12V group 31 Duracell (4) House 24V Leoch group 921
INTERIOR LIGHTING:	LED
STEERING:	Hynautic hydraulic
CLIMATE CONTROL:	Cruisair air conditioning - 240 V with (4) compressors 60,000 BTU's SMX II controls 5kW 12v diesel heater (saloon)
SHOWERS:	Owner head Guest head Cockpit shower
LAUNDRY:	LG washer and Maytag clothes dryer
GALLEY:	Isotherm refrigerator Isotherm drawer refrigerator freezer unit Force 10 LPG 3 burner stove and oven GE Profile microwave Seagull freshwater filter
ENTERTAINMENT:	50" Vizio 4k flat TV Sonos soundbar
INTERIOR WOOD:	Teak - matte, semi-gloss finish
INTERIOR COUNTERS:	Granite counter in galley Corian in both heads
INTERIOR UPHOLSTERY:	Ultrasuede
INTERIOR FLOORING:	Teak and spruce hardwood
WINDLASS:	Maxwell VWC 2500 - 24V
GROUND TACKLE:	40 KG / 88 LB Vulcan anchor with 300' 3/8" high test stainless steel chain spare 20KG / 44 LB Rocna with 200' rode Spare Fortress 15 LB FX-23
MAST/CRANE:	Nick Jackson Linear hydraulic Davit 1000LB
TENDER AND OUTBOARD:	2008 Caribe 10'3" RIB 2020 Tohatsu 20 HP outboard
MACHINERY EQUIPMENT:	Reverso oil change system Walbro fuel transfer pump Racor 500 for wing Racor 500 for generator Racor 900 for fuel transfer Dual Racor 900 for main Hart tank tender for water tanks (in-op) iSpring water filtration system
NAV/COM BRANDS:	Garmin ACR NetGear Wi-Fi Sine Wave Wi-Fi Booster Simrad ICOM Standard Horizon Fluxgate Ritchie
WATER MAKER:	Spectra 400 gallons per day

Nordhavn 50 Grey Goose

BILGE PUMPS:	(1) Rule 1100 GPM (1) Rule 2000 GPH (1) 4000 GPH
TANKAGE: (approximate)	
DIESEL FUEL:	1,320 gallons 4990 L (4) Fiberglass tanks
FRESH WATER:	300 gallons 1,135.62 (4) Fiberglass tanks
LUBE OIL:	Removed
HOLDING BLACK:	55 gallons 208.2 L (1) Fiberglass tank
ADDITIONAL EQUIPMENT:	Stidd helm chair
SAFETY:	Fireboy (fixed fire suppression) in engine room and lazarette (6) portable extinguishers Fire blanket (2) Fire masks Emergency tiller (2) Lifesling EPIRB 6-person Viking liferaft ACR Ditch bag (2) personal EPIRB Smoke detectors CO detectors
PHOTO DATE:	Most detail photos were taken in July 2023
Note: information believed accurate, buyer should verify	
© JMYS 2024	

INTRODUCTION:

After over four years of cruising the east coast, Bahamas, and everywhere in between, **Grey Goose** is being offered for sale to new ownership. **Grey Goose** is hull number 11 of the famed N50 series. It's efficient full-displacement hull, and bulbous bow allow for a cruising speed of around 8 knots with a range of up to 3,000 nautical miles. The hull is constructed of solid fiberglass and is both strong and durable, making it suitable for offshore cruising.

ACCOMMODATIONS & LAYOUT:

MAIN SALOON:

The saloon serves as the ideal central gathering location, where most of the family meals are enjoyed together. The custom teak table can comfortably accommodate up to six guests, creating a warm and inviting atmosphere for dining. Providing both comfort and practicality, the built-in bench seating outboard on both sides serves as additional storage space. For digital entertainment, the 50" Vizio 4k flat screen TV and Sonos soundbar offer an immersive home theater experience, making the saloon a cozy and entertaining space for all.

- 50" Vizio 4k flat screen TV
- Teak and Spruce flooring
- Polished stainless overhead grab rail
- Ultrasuede upholstery
- Sonos sound bar
- LED lighting
- Cruisair air conditioning
- Sliding door aft
- 5kW 12v diesel heater
- Hi/lo teak table to port

Nordhavn 50 Grey Goose

- L-shaped settee to port
- Starboard bench settee
- Custom wood blinds

GALLEY:

The galley is designed to offer abundant counter space and convenient access to appliances, food, and utensils for meal preparation. Positioned at the front end of the saloon and outboard to port, the cook enjoys a scenic view outside and aft. The area is equipped with an opening window that provides excellent ventilation and light. Storage lockers are situated overhead, while drawers and two pull-out pantries utilizing Rev-A-Shelf fittings are located below counter height. The granite countertop integrates a double basin undermounted sink, and the installed appliances are easily accessible, providing all the essential tools for cooking.

- Isotherm refrigerator
- Isotherm two drawers refrigerator freezer combo
- Force 10 LPG 3 burner stove and LPG oven
- GE Profile microwave
- Seagull freshwater filtration
- Granite counter tops
- Stainless steel sink

PILOTHOUSE:

Grey Goose's pilothouse is a comfortable and functional command post. The Nordhavn 50 provides near panoramic visibility - forward and both sides provide an unobstructed view. The two sliding doors located outboard link directly to the Portuguese bridge. The navigation and communication priorities have been well-considered in the placement and configuration of the console and dash, while a Stidd helm chair accommodates the skipper's needs. The electronics are neatly arranged for convenience, and the labeled breakers in the large electrical panel make troubleshooting easy. Main engine, wing engine and generator controls are all well positioned for straightforward operation. For a refreshing cross breeze, open the center outboard windows and above hatch.

Settled aft in the pilothouse rests a comfortable and inviting L-shaped settee with cushions positioned below and behind, offering additional storage space underneath the seating area. A fixed teak table sits at the front of the settee. To help ease long passages, a comfortable watch berth lies aft of the pilothouse settee. The watch berth also houses a drop in freezer and additional storage. An inboard, aft wet hanging locker features ample storage capacity. The stairs leading forward take you to the landing with entrances to both staterooms, and the laundry appliances are conveniently located in the stairwell.

- Garmin 24" Radome radar
- (2) Garmin GPSmap 5208 chartplotter
- Garmin GPSmap 7215 chartplotter
- (6) Garmin GMI10 multifunctional displays
- Simrad AP20 autopilot
- Ritchie compass
- Trace HAL9000 inverter panel
- Victron BMV-712 battery monitor (24V)
- Balmar Battery monitor (12V)
- ABT bow thruster controls
- Side Power stern thruster controls

Nordhavn 50 Grey Goose

- ICOM IC-M604 VHF
- Standard Horizon Eclipse VHF
- Windlass controls
- Destroyer wheel
- ACR search light control
- Bildge pump counters
- High water alarms
- Fireboy fire suppression controls
- Engine room temperature monitoring
- Media speakers (in-op)
- Pilot house watch berth
- L-shaped settee with Ultrasuede upholstery
- Storage under watch berth
- Engel drop in freezer
- Naiad stabilizer panel
- NetGear Wi-Fi
- 240V electrical panel
- 120V electrical panel
- 12V electrical panel

FORWARD STARIWAY TO LIVING QUARTERS:

To starboard, a gently curving staircase leads down to the ship's living quarters. Built into the starboard wall of this staircase is an LG washer and Maytag clothes dryer, and other convenient storage opportunities, as well as access to some plumbing.

GUEST STATEROOM – Forward:

Descending the forward stairs at the front of the pilothouse leads to the guest stateroom located below the foredeck. The spacious interior is adorned with a wide double bed to port, while a desk and stool to starboard provide an office space and storage area. The teak finish throughout the space creates a continuous theme of warm, rich timber. Outboard, four opening portlights provide abundant natural light and ventilation, offering a refreshing ambiance.

- Port side berth
- Cruisair climate control
- Connected guest head forward
- Desk to starboard
- LED lighting
- Portlights to starboard and port
- Hanging closets
- Ample storage

GUEST HEAD:

Conveniently adjoining the guest stateroom is the guest head, which remains hidden by a privacy door. The guest head boasts a stand-up shower, Raritan freshwater toilet, and corian counter with a porcelain sink, complete with medicine locker and drawers for storing all your essentials. With its elegant features and thoughtful layout, the guest head promises a refreshing experience.

Nordhavn 50 Grey Goose

- Raritan macerating freshwater head
- Teak magazine rack
- Standup shower
- Opening hatch in shower
- Corian countertops

OWNER STATEROOM:

Grey Goose's arrangement allows for two convenient entrances into the owner stateroom. The first provides quick and easy access from the entry-level saloon/galley, which can be closed for privacy. The second entrance is a separate door located at the forward landing from the pilothouse stairs. The spacious bed is positioned athwartship in an island configuration, allowing for easy entry and exit from either side. Multiple hanging lockers and drawers are provided for storage. The stateroom features opening port lights outboard to the port and is equipped with efficient air-conditioning, ensuring comfort throughout. Outfitted in teak joinery, the stateroom provides an elegant and sophisticated ambiance. Its midship location offers privacy, tranquility, and less motion when underway. During daytime, the saloon/aft entrance can be left open for increased ventilation and light.

- Custom queen mattress
- Cruisair climate control
- Ample drawer and closet space
- Access to engine room

OWNER HEAD:

The conveniently located private head to starboard is a luxurious addition to *Grey Goose's* layout. It features a corian counter and porcelain sink, along with a stand-up stall shower enclosed with a curtain and a freshwater toilet. The space is thoughtfully designed, boasting a medicine cabinet complete with a mirror. Multiple lockers and drawers are available for stowing away personal hygiene supplies, keeping the area uncluttered and tidy. With careful attention paid to every detail, the private head is a serene and relaxing space.

- Raritan macerating freshwater head
- Stand up shower
- Corian countertops
- Medicine cabinet
- Vented portlight
- Dry storage in shower stall

WORKING AREAS:

ENGINE ROOM:

Designed for convenience in service and maintenance, the primary machinery space is accessible through a large door with a viewing window located in the aft bulkhead of the owner's cabin. Sound management is given top priority, and PAE has done an outstanding job in ensuring that the Nordhavn 50 engine room remains quiet. Maintenance strakes have been strategically placed on both sides of the main to provide ample headroom, while the outboard benches offer a comfortable seating option for engine room checks. The aft section is occupied by the Yanmar wing engine and Northern Lights generator. With easy access to

Nordhavn 50 Grey Goose

through hulls and fuel valves (supply, return, and transfer), the engine room is a breeze to navigate. The lighting has been recently updated, and a door leading to the lazarette is located aft. You can also access the engine room from the saloon floor. This machinery space is impeccably organized, easy to maintain, and a cavernous retreat that you will enjoy inspecting time and time again.

- Luggar L6108A2 250 HP main engine
- Yanmar 3GM30F wing engine
- Walbro fuel polishing and transfer
- Naiad active fin stabilizers
- Northern Lights 12kW generator
- Access from lazarette, and owner stateroom
- Fire Boy fire suppression
- Reverso oil changer for main, and generator
- Fiberglass fuel tanks
- Overhead lighting

LAZARETTE:

This below-deck aft machinery compartment can be accessed via both the cockpit hatch above and a door from the engine room. With sliding barrel bolts, the overhead hatch securely fastens when unoccupied. The steering table is sturdy, housing the rudder stuffing box and autopilot controls, with neat and tidy hydraulic hose routing. A range of hardware is kept here, including air conditioning compressors, batteries, an inverter, a charger and a 400 GPD watermaker aft. Should the need arise, an emergency tiller is readily available in the overhead. Drainage through hulls are primarily outboard on each side, within easy reach, while the Fireboy fire suppression bottle is mounted on the front bulkhead.

- Side-Power stern thruster
- Thruster batteries
- Hydraulic steering access
- Emergency tiller handle
- Battery storage
- Spectra Newport 400 watermaker
- Ship's air conditioners
- Engel hard cooler

EXTERIOR:

SWIM PLATFORM:

The swim platform serves as the perfect spot for conducting dinghy operations, given its favorable location. Additionally, U rail "staples" and a swim ladder are available for use. With these features in place, the process of transferring people or equipment from the dinghy onto the boat's swim platform becomes quite streamlined. Accessing the cockpit is easy, with an entrance through the stern gate.

- Hinged swim ladder
- Safety staples
- Transom boarding gate
- (4) Fuel fills

Nordhavn 50 Grey Goose

COCKPIT and SIDE DECK:

Grey Goose's cockpit offers a perfect setting for relaxing or a barbeque when anchored, complete with ample space and thoughtful features. To provide additional shade, a two-sided cockpit enclosure, and above stainless-steel frame have been added to the extended boat deck overhang, with canvas stretched across it. For convenient entry to the lazarette below, there is a large centerline hatch. The boat is also equipped with a starboard side deck boarding door and transom boarding door. Additionally, the cockpit features both hot and cold freshwater washdown taps located in the aft starboard locker, adding to the convenience of guests on board. Safety equipment, like the cased Lifesling and throw line, are also mounted to the ladder leading to the boat deck.

- Hot and cold freshwater cockpit shower
- Stainless steel ladder to boat deck
- Transom teak cap rail
- Lazarette access
- Saloon access
- Starboard locker storage
- Port LPG locker
- Barbeque grill
- Overhead shading
- Two sided cockpit enclosure
- Engine room air intake
- Lifesling
- Rear facing camera

FOREDECK:

Accessing the foredeck on **Grey Goose** is easy and seamless. You can reach it by heading forward via the Portuguese bridge, which includes a hinged molded fiberglass door located on the starboard side. Right in front of the Portuguese bridge, guests on board will find a large molded-in deck box that runs along the centerline, perfect for storing things like fenders, shore power cords, hoses, Rocna 20kG with 200' of rode, Fortress FX-23 spare anchor and other items. The stout stainless-steel double anchor roller is backed by a rugged Maxwell VWC 2500, which can easily be operated by deck foot buttons or a toggle switch in the pilothouse. The boat's 40kg Vulcan anchor is paired with 300' of 3/8" high-test stainless steel chain, ensuring safety and security when the vessel is anchored. One of the Nordhavn 50's unique features is its self-draining anchor well, which collects muddy water runoff from the chain and directs it overboard to the waterline, keeping the deck clean and dry. There are also two wash down spigots in the starboard bridge locker, ideal for both fresh and seawater use. Finally, the foredeck includes a Lewmar opening hatch that can be opened to provide plenty of natural light and fresh air to the forward cabin.

- Maxwell VWC 2500 windlass
- 40kg Vulcan with 300' of high test stainless steel chain
- Spare Rocna 20kG anchor with 200' rode
- Spare Fortress FX-23 anchor
- Built-in deck box
- Raw water washdown
- Freshwater washdown

Nordhavn 50 Grey Goose

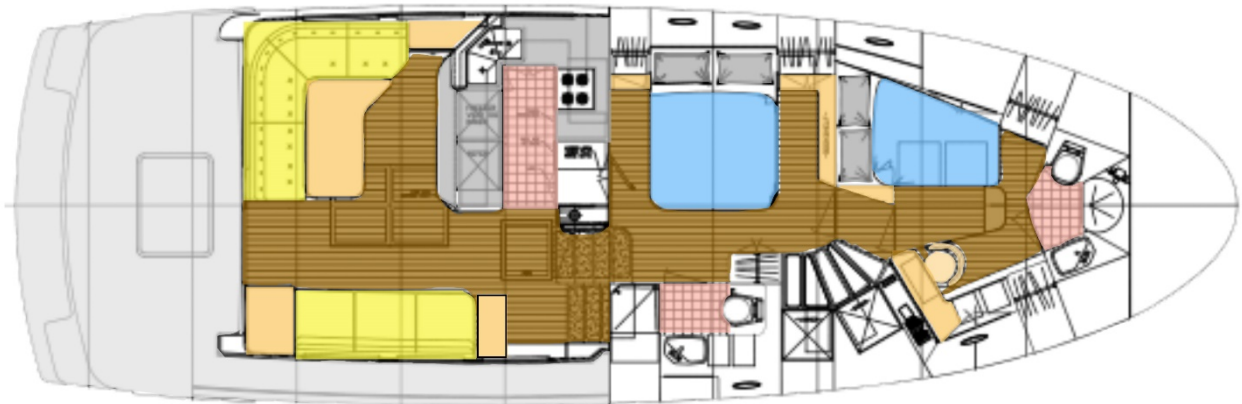
- Shore power connections

BOAT DECK:

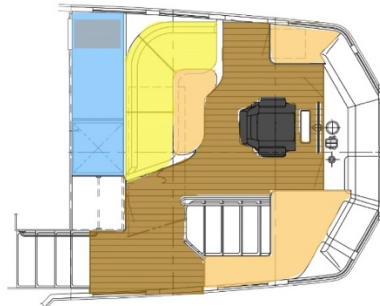
Reach the Nordhavn 50's spacious boat deck either from the port side of the pilothouse or by climbing up the built-in ladder from the cockpit. The large area features stainless steel railing outlining the perimeter which provides ample space for guests to relax and enjoy the views while on board. Mounted athwartships on the boat deck is the 10' Caribe RIB tender, which can be easily deployed using the reliable and sturdy Nick Jackson hydraulic crane. For improved self sufficient operations, a vast solar array supplies charging power to both 12v and 24v power banks.

- Nick Jackson Linear electric hydraulic crane 1000LB
- Secure stainless-steel railing
- 2008 Caribe 10'3" RIB | 2020 Tohatsu 20 HP outboard
- 890-watts 12v solar array
- 410-watts 24v solar array

LAYOUT: Main and Lower Deck – Saloon, Galley Head and Staterooms



LAYOUT: Pilothouse



Nordhavn 50 *Grey Goose* Talk View Tour

Nordhavn 50 Grey Goose



<https://www.youtube.com/watch?v=VOAdArYLNw>



BROKER COMMENTS:

Nordhavn 50 Grey Goose

Grey Goose enters the market strongly with beautiful features, impressive equipment, and strong capabilities. She is a highly desirable trawler due to her exceptional stability, range, and comfort. With a sturdy construction and reliable systems, this vessel can handle even the roughest seas with ease. Its fuel capacity can take guests on long-range cruises, without worrying about refueling. Additionally, the **Grey Goose** offers luxurious amenities, spacious living spaces, and multiple deck areas for outdoor relaxation.

EXCLUSIONS:

Potential purchasers should assume that items on the vessel at the time of viewing, but not specifically listed on this sheet, are not included with the sale of the yacht. These specifications are believed to be true and correct but cannot be guaranteed. Items excluded include, but are not limited to; paintings, books, personal items in lockers and drawers*, Scuba diving gear, fishing rods and reels, SUP and paddle, loose items in lazarette that are not boat specific, tools, decorations in staterooms, bedspreads, comforters, bed pillows, all towels, kitchen supplies (pots, pans, dishes, silverware), antique nautical items and binoculars. *Owner's personal effects and clothing will be removed prior to closing.

DISCLAIMER:

Specifications and details of this vessel are provided in good faith for informational purposes only. Details regarding the specifications, operating characteristics and condition of the vessel have been obtained from sources believed reliable, but the owner and brokers cannot guarantee or warrant the accuracy of this information or the condition of the vessel. Buyer assumes responsibility to verify all speeds, capacities, consumptions and other measurements contained herein and otherwise provided and agrees to instruct his/her agent or surveyor to confirm such details prior to purchase. Vessel is offered subject to prior sale, price and inventory changes and withdrawal from market without notice.

Brokerage: JMYS is a US based (licensed and bonded yacht brokerage in California, Florida and Washington) with an international emphasis specializing in ocean capable trawlers and recreational tugs. Our brokers are experienced boaters, most are trawler owner/operators with thousands of hours and miles at sea. The team at JMYS has extensive trawler and motor yacht product knowledge and our skills are available for coaching after the sale has concluded.

Co-Brokerage: Fellow yacht broker association members: This listing is available for co-brokerage and JMYS is a 50/50 house. Courtesy showings are available by appointment. Florida listings subject to appropriate broker licensing required by law.

This listing specification has been approved by the sellers for accuracy. The photos, images and descriptive content are copyrighted by JMYS and may not be copied or used without specific written permission.

Please contact listing broker, **Jeff Merrill, CPYB** by phone, text or email for additional information or to schedule your personal showing. Jeff is available via Mobile + 1 949.355.4950 (call or text). You can send a detailed Email to: Jeff@JMYS.com.



Licensed and Bonded in California, Florida, Virginia and Washington.

Skype: jeff.merrill | You Tube: Jeff Merrill Yachts | Twitter: @JMYS_Trawlers | LinkedIn: jeff.merrill

Facebook: Jeff Merrill Yacht Sales | Instagram: JMYS_Trawlers

Chairman,

Nordhavn 50 Grey Goose

Certification Advisory Council (CAC) for CPYB 2023 and 2024

Yacht Brokers Association of America | International Yacht Brokers Association (Florida) | Northwest Yacht Brokers Association
| California Yacht Brokers Association – President 2015 and 2016



***Listing broker. John Hoffman**



About the listing broker: John Hoffman has years of experience working with the Nordhavn brand over the years, having retired from his position as Nordhavn Commissioning Manager in 2015. John's product knowledge, systems skills and friendly, helpful attitude have helped him excel as a JMYS yacht broker. John has his yacht salesman license in Florida and is eager to work with many current clients and also looking forward to helping new buyers and sellers. Please contact listing broker John Hoffman for additional information or to schedule a viewing appointment. You can email John at John@JMYS.com or call/text +1 772.215.3720.