

Nordhavn 50 *Mabuhay*



JMYS

Jeff Merrill Yacht Sales, Inc. | www.JMYS.com
4153 Country Club Drive | Long Beach, CA 90807

Florida address: Jeff Merrill Yacht Sales, Inc. | 2650 W State Road 84, Suite 103 | Ft. Lauderdale, FL 33312



MABUHAY

Price: \$725,000.00 Location: Chesapeake, VA

Nordhavn 50 Mabuhay

YACHT NAME:	Mabuhay
BRAND AND MODEL:	Nordhavn 50 (flybridge)
TYPE:	Long range passage maker with raised pilothouse and flybridge
STATEROOMS:	(3) Owner midship Guest's forward with four berths
HEADS:	(2) Freshwater Tecma (Owner) Freshwater Vacuflush (Guest)
MODEL YEAR:	2003
HULL NUMBER:	25
HULL COLOR:	Gray gelcoat
REGISTRY:	Canadian
DESIGNER:	Jeff Leishman
BUILDER:	P.A.E./South Coast Taipei, Taiwan ROC
HULL MATERIAL:	Solid Fiberglass
DISPLACEMENT:	55,932 lbs. 25.37 MT
BALLAST:	6,600 lbs. 2.99 MT (Lead)
SPEED:	Cruise 8.1 knots. Top 10 knots
LOA:	51' 2" 15.6 M
LWL:	44'2" 13.47 M
BEAM:	16' 4.88 M
DRAFT:	5'8" 1.75 M
D/L:	419
A/B:	2.1:1
Cp:	Prismatic Coefficient .63
AIR DRAFT:	21'9" 6.62 M to top of arch (estimate) 35' with antennas up
DECK:	White deck with gray nonskid
MAIN ENGINE:	Lugger L6108A2 300 HP Turbo charged (Main hours: ~6,525) August 2023
TRANSMISSION	ZF 3.0:1 reduction Mathers MMC electric control
SHAFT / PROPELLER	2 1/4" Aquamet 22 shaft 34" x 32" four blade bronze propeller
EXHAUST:	Wet exhaust
WING ENGINE:	Yanmar 3JH3E 40 HP (Wing hours: ~122) August 2023
THRUSTERS:	ABT 10 HP Bow thruster 24V (proportional control) Side Power Stern thruster (proportional control) Controls in pilothouse and flybridge
STABILIZATION:	Naiad 252 active fins (Hydraulic) Flopper Stopper
ELECTRICAL:	60 Hertz – US style - 50-Amp 700W solar
SHORE POWER:	Foredeck 50-Amp House 240V AC Foredeck 50-Amp Air conditioning 240V AC Foredeck 30-Amp house 110V AC
GENERATOR:	Northern Lights 12 kW 240V AC 60Hz (Generator hours: ~7,168) August 2023
INVERTER/CHARGER:	Outback inverter charger (house bank) Victron charger (main, bow thruster, windlass) Mastervolt charger (stern thruster)
BATTERIES:	(4) 12V Lifeline AGM 8D (house) (2) 12V Lifeline AGM 8D (start, bow thruster, windlass) (1) 12V Lifeline AGM 8D (wing) (2) 12V West Marine 4D (stern thruster)

Nordhavn 50 *Mabuhay*

INTERIOR LIGHTING:	Halogen and LED
STEERING:	Hynautic hydraulic Air pressure reservoir
CLIMATE CONTROL:	Marineair air conditioning - 240V with (4) compressors 68,000 BTU's
SHOWERS:	Owner head Guest head
LAUNDRY:	Asko separate clothes washer (washer in-op) and clothes dryer
GALLEY:	Thermador four (4) burner propane stove with electric oven (2) SubZero refrigerator (2) SubZero freezer drawers (1) GE drop in freezer (pilothouse) GE Profile convection microwave oven Krushr trash compactor
INTERIOR WOOD:	Teak
INTERIOR COUNTERS:	Surell counters
INTERIOR UPHOLSTERY:	Faux leather
INTERIOR FLOORING:	Teak and spruce cabin soles with woven overlay in saloon and pilot house
WINDLASS:	Maxwell VWC 3500 electric - 24V
GROUND TACKLE:	Bruce 80kG (176lb) primary 400' 3/8" chain Secondary Fortress FX-85 with 200' of line
MAST/CRANE:	Aritex HSC-600 hydraulic and electric - 1,300 pound lift Plug in operation controller
TENDER AND OUTBOARD:	Caribe DL-12 rigid fiberglass bottom inflatable RIB Honda 40 HP Four Stroke Outboard (Steering in-op)
MACHINERY EQUIPMENT:	Reverso oil changer Walbro fuel transfer pump Racor 900 for fuel transfer Torrid 20-gallon water heater Hart tank tender
NAV/COM BRANDS:	Icom Simrad Furuno
WATER MAKER:	Sea Recovery Aqua Matic SRC-900
BILGE PUMPS:	Jabsco belt driven pump 8 GPM (2) Rule 3,500 GPH 24V with float switch Edson manual
DIESEL FUEL:	1,350 gallons 5,110 L (4) Fiberglass tanks
FRESH WATER:	350 gallons 1,324 L (3) Fiberglass tanks
HOLDING BLACK:	50 gallons 189.3 L (1) Fiberglass tank
ADDITIONAL EQUIPMENT:	Stidd helm chair in pilothouse Todd helm chair in flybridge
SAFETY:	Fireboy (fire suppression) Emergency tiller Lifesling (2) EPIRB Winslow liferaft Ditch bag
PHOTO DATE:	Photos taken August 2023
Note:	information believed accurate buyer should verify © JMYS 2023

INTRODUCTION:

Mabuhay is an impressive trawler that is both visually appealing and practical. Its sturdy gray gelcoat hull and streamlined long profile, embellished with blue stripes, create a stylish, confident and capable cruiser. With three cabins and two heads, the vessel assures a comfortable stay for its guests. Along with the cockpit, foredeck, boat deck, and flybridge, ***Mabuhay*** offers a well-equipped exterior. The Nordhavn 50 model has stood the test of time as a reliable and efficient long-range cruiser. Hull number twenty-five and the final model of its series, ***Mabuhay*** is now available for sale by its third owner. Her original purchaser had opted for many sought-after amenities, including a wide-body saloon, a three-cabin layout, a wet exhaust for the primary engine, a well-furnished flybridge, and an Aritex dinghy crane.

Nordhavn 50 *Mabuhay*

ACCOMMODATIONS:

MAIN SALOON:

You can board *Mabuhay* from the starboard side deck or from the center door in the transom that connects to the swim platform. Moving forward from the cockpit you can walk along the starboard side deck forward to the Portuguese bridge and foredeck.

Mabuhay has a spacious and comfortable saloon on the main deck with large opening windows providing natural light and near panoramic views. Teak and spruce flooring, rich teak walls finished in satin gloss, and her abundant natural lights create a warm and welcoming feel. To port is an L-shaped settee for six, and a teak hi-lo table. Upholstery has been recovered with faux leather in 2023. It also features a built-in entertainment center with a Toshiba 55" flat-screen TV. The saloon's luxurious and warm design is wonderful for entertaining guests and relaxing with family.

- Teak and spruce sole
- Cherry and maple Hi-Lo Dinette table. sits 6-adults comfortably
- (2) Ekornes Style Reclining Chairs with Ottoman's
- Dimmable Halogen Overhead Lighting, mixed with some LED Overhead (non-Dimmable)
- Recessed Cantalupi lights controlled by Australian Clipsal wall switches
- Custom faux leather settee upholstery
- Extensive storage underneath settee
- LED courtesy lighting (blue inside, red outside) for getting around boat at night
- 110V AC outlets – many upgraded with USB.
- MarineAir air-conditioning with reverse cycle heat and heat strips for cooler climates
- Toshiba 55 Inch flat screen TV
- Teak overhead grab rail
- Remote water maker controls

GALLEY:

This galley is a true gem, providing ample space for cooking both on the move and while anchored. The stunning Surell countertop houses a convenient double basin under-mount sink that is ideal for meal preparation activities. All appliances in the galley are positioned within close proximity and offer easy access, thus ensuring that every culinary necessity is readily at hand, creating an ideal environment for whipping up delicious meals, regardless of whether the vessel is underway or at rest.

- (2) Sub Zero refrigerators and (2) Sub Zero freezer drawers
- Pantry (Instead of stairs down to owner stateroom)
- Thermador 4-burner LPG stove and oven
- (2) Aluminum 20 lb. propane bottles stowed on port side transom locker.
- GE Profile Advantium microwave oven with built in exhaust
- Krushr under counter trash compactor (2022)
- Bosch dishwasher
- Dual basin stainless sink
- Garbage disposal
- Surell Countertops
- Teak and holly sole

Nordhavn 50 *Mabuhay*

- Under counter storage lockers and drawers
- Paper towel holder
- Overhead lockers
- Opening window outboard

PILOTHOUSE:

Mabuhay's primary command center is her pilothouse, which offers outstanding visibility on both sides and ahead. The helmsperson, situated comfortably in the Stidd helm chair, directs operations with ease. Two electrical panels with clearly marked breakers is present along with easily accessible controls for the main engine, wing engine, stabilizer, and generator. The center outboard windows allow for cross-ventilation, while the two outboard sliding doors provide access outside to the Portuguese bridge. The forward console and dashboard house precisely positioned electronic equipment.

Located aft of the pilothouse, you will find a comfortable L-shaped settee accompanied by cushions positioned both below and behind it, with storage space available beneath the seating area. The settee is complemented by a fixed teak table before it creating a seamless ambiance. A shelf area has been constructed outboard to port with a top loading freezer situated underneath the shelf. Moving forward, you will come across a staircase that leads to a landing offering entry to all three staterooms. In this very stairway, an Asko laundry drier has been attached outboard.

- Stainless steel destroyer wheel
- Wet hanging locker
- Ample storage
- Lugger main engine control panel
- MMC controls
- Yanmar wing engine control panel
- Northern Lights generator panel
- Naiad active fin stabilizer control head
- DC and AC electrical panels – port side 12V, starboard side 240V/120V AC
- ICOM M502 VHF radio 1
- ICOM M602 VHF radio 2 with DSC
- Handheld VHF radio
- ICOM M802 SSB Radio
- Furuno Nav Net 1 chart plotters using C-Map NT (twin displays)
- Windows PC with TimeZero Professional and 27-Inch HD display
- Furuno AIS GP 37
- 12 kW Radar with 6' open array antenna Furuno
- 4 kW Radar with 2' open array antenna Furuno
- Port and starboard fiberglass sliding doors
- L-Shaped Settee with Fixed Table
- STIDD helm chair
- Maxwell windlass controls
- Rule and Jabsco bilge pump controls and alarms
- GE top load deep freezer
- ABT bow thruster control
- Side-Power stern thruster control
- LED ACR search light controls

Nordhavn 50 *Mabuhay*

- LED 48" light bar control
- Four speaker stereo AM/FM/Bluetooth player Kenwood (in-op)
- Ritchie Compass
- StarLink Internet (RV package) 2022
- Outback Inverter/Charger control head
- Buck boost power transformer

OWNER STATEROOM:

Down the stairs from the pilot house and midship is the owner stateroom. The queen-sized bed in the owner stateroom is thoughtfully positioned athwartship, making entry and exit effortless. An ensuite head is conveniently located on the starboard side. Multiple hanging lockers and drawers provide ample space for clothing storage. Enjoy natural light and fresh air from the port lights on the outboard to port. The stateroom is comfortably air-conditioned, creating a welcoming retreat. White paneling on the bulkheads adds to the spacious feel of the room. The engine room is also accessed via a dogged door from the owner stateroom.

- Amidships island queen berth
- Access to engine room
- Beveled Wall mirror
- (2) Stainless Oval Port Windows (port side)
- LED overhead lights
- (2) chrome LED reading lights
- (1) Black Hella fan
- Teak and spruce flooring
- Sealed, quiet, engine room access door

OWNER HEAD:

The private head on the Nordhavn 50 is conveniently located to starboard. It features a Surell counter and sink, offering both style and practicality. The stand-up stall shower comes with a glass door and provides a refreshing bathing experience with fresh water. The head is equipped with a modern and efficient Tecma freshwater toilet. Additionally, it offers ample storage space with a medicine cabinet, mirror, lockers, and drawers to accommodate all your personal hygiene supplies.

- Tecma Silent Plus 2-G freshwater toilet
- Molded stand up shower with seat
- Shower grate
- Molded Surell sink and counter
- Beveled wall mirrors
- Abundant reach-in cabinets and drawers
- Blue LED courtesy lighting
- (1) Stainless oval port window (port side)
- Grohe shower faucet controls
- Holding tank monitor
- Water tank monitor
- Medicine cabinet with mirror

Nordhavn 50 *Mabuhay*

- Drawers and lockers for storage

GUEST STATEROOMS:

The guest staterooms aboard *Mabuhay* are located forward and are separated by a centerline bulkhead. Each cabin can be accessed through a pocket door and mirrors the other with two built-in single berths, cleverly designed with one on top of the other. The rooms come with ample storage space in the form of drawers, lockers, and bed stands. The staterooms also provide individual access doors to a shared head and shower forward, which is just two steps away. Both guest staterooms have opening port lights and fans that ensure fresh air circulation. These staterooms are versatile, practical, and efficient as the upper berths can be used as storage shelves when not in use. The beautiful teak joinery and teak and spruce soles add a touch of elegance to the cozy cabins.

- Stacked bunk beds port and starboard
- Centerline dividing wall
- Drawers under bottom bunk beds
- Blue LED courtesy lighting
- Built In cabinet/nightstand with (4) drawers
- Beveled wall mirror
- Hanging lockers
- (2) chrome reading lights with LED bulbs
- Hella fans
- Port lights with black out stainless shades
- Individual access to guest head

GUEST HEAD:

Accessed from either guest stateroom, the raised section forward of *Mabuhay* features a spacious head and a generously sized shower compartment enclosed by a curtain for added privacy. The sink with its expansive countertop offers ample room for personal care products. You'll appreciate the plenty of storage lockers present in the head for conveniently storing toiletries and other personal items. The head also features a unique flooring design as it incorporates a lift-up hatch that provides easy access to the forward bilge area and bulbous bow, making it possible to service the bow thruster with ease. Additionally, the shower compartment has natural ventilation through a large opening hatch that comes complete with a screen for enhanced comfort.

- VacuFlush freshwater head
- Teak magazine racks
- Standup shower
- Opening hatch in shower
- Surrrel countertops

ENGINE ROOM:

Entry to *Mabuhay's* engine room is through a dogged door in her owner's stateroom. One of the most notable features of this yacht is the excellent sound attenuation, which ensures ultimate comfort when underway. Pacific Asian Enterprises (PAE) did an outstanding job of engineering this vessel to keep the engine room as quiet as possible. The Lugger main engine is located in the forward and center section over the bilge whilst the Yanmar wing engine and Northern Lights generator occupy the aft section of the

Nordhavn 50 *Mabuhay*

engine room. Access to the through hulls and fuel valves for supply, return, and transfer is incredibly convenient.

- Luger Model No. L6108A Turbo-Charged, after-cooled diesel engine
- Wet Exhaust
- Dual Racor 900 on main engine
- One Racor 500 for wing engine
- One Racor 500 for generator
- One Racor 900 for fuel transfer system
- Yanmar 3JH3E 40 HP wing engine
- Northern Lights M843N 12kW Generator in Sound Shield
- (4) 24V blower fans
- 2.25" Aquamet 22 tapered main engine shaft
- Kidde Fireboy fire suppression system
- (2) Main fiberglass fuel tanks with sight glasses
- Walbro fuel transfer pump and timer
- Reverso oil change pump
- Custom stainless shelves for supplies and spares storage
- Tool chest with sliding drawers
- (2) freshwater pumps
- (1) saltwater washdown pump
- Naiad active fin stabilization
- (2) Rule 3,500 GPH 24V with float switch

LAZARETTE:

Located beneath the aft cockpit, this machinery space provides easy access via the cockpit hatch above. Here, you'll find a host of essential equipment, such as air conditioning compressors, batteries, steering, and the inverter. The Nordhavn 50 also features a high-capacity 900 GPD AquaMatic watermaker with media filter, which is installed aft for easy access. Multiple through hulls are located outboard on both sides to allow for efficient drainage. Additionally, the SEP150 24V Side Power Stern Thruster - complete with its own charger and battery bank - are expertly installed in this location, ensuring smooth and efficient operation.

Mabuhay's lazarette is a great place for many storage options.

- Large fiberglass hatch with gasketing
- Molded diamond plate fiberglass flooring
- Outback inverter/charger
- Inverter bypass switch
- Stern thruster battery bank with Mastervolt Charger
- House battery bank
- Rudder stuffing box and steering table with hydraulic hose runs and bypass
- Auto pilot pumps
- Emergency tiller
- (4) Cruisair air conditioning compressors and pump
- Aqua Matic 900 GPD watermaker

SWIM PLATFORM and COCKPIT

Nordhavn 50 *Mabuhay*

The swim platform on the Nordhavn 50 is the ideal spot for arriving by dinghy or taking a refreshing dip in the water. Access to the cockpit is through the stern gate, which is both secure and easy to use. From there, you'll find a convenient ladder forward that leads up to the boat deck. The cockpit provides ample space for relaxing and entertaining guests, with a partially covered overhead area that creates a shaded oasis. It's a wonderful spot to enjoy the panoramic view from the boat and perhaps set up some deck chairs for lounging in comfort.

- Swim platform with U rails
- Swim ladder
- (4) fuel fills
- Boarding gate from swim platform to cockpit
- Teak cap rail
- Salt water & Freshwater wash down spigots
- Propane locker aft (2) 20 lb. tanks
- Storage locker aft
- Emergency tiller deck plate access
- Freeing ports for shipping blue water in large seas
- Built in stainless ladder for access to the boat deck/flybridge
- Hawse pipes with clean horns for line handling
- Large fiberglass hatch for access to the lazarette
- Large fiberglass storage box port side
- Wide walking side deck to starboard that is covered overhead and runs from the cockpit aft deck up forward to some steps that rise up to the Portuguese bridge deck
- Fishing rod storage system overhead side deck
- Anchormax warping winch
- Magma BBQ

FOREDECK:

Mabuhay boasts a functional and safe foredeck design, featuring a sturdy Portuguese bridge in front of the pilothouse. Accessing the foredeck from inside the bridge is simple, thanks to a convenient hinged gate door. Anchoring is a quick and effortless process with the powerful and reliable Maxwell windlass managing the ground tackle, which includes the anchor and chain. Additionally, the fiberglass deck box is integrated into the deck design and provides an ideal location for two Dorade vents, further enhancing the boat's ventilation system. For added safety, a sturdy stainless steel bow pulpit is installed, ensuring safe and stress-free navigation, especially in rough waters. In short, the foredeck space on the Nordhavn 50 is a perfect blend of practicality and design, ensuring convenient, safe navigation for all onboard.

- Diamond pattern non-skid decking
- Stainless steel rails
- Portuguese walk around bridge
- Covered starboard side deck
- Kahlenberg D-2 dual trumpet chrome horn
- Fortress anchor (stored in lazarette)
- Flopper stopper (port side)
- Maxwell electric windlass
- Bruce 176 lb. (80kG) anchor
- 400 Feet of 3/8 Inch ISO short link G40 high test, hot dipped galvanized ACCO brand chain

Nordhavn 50 *Mabuhay*

- Red LED courtesy lights
- Freshwater washdown
- Raw water washdown
- Stainless breast plate below anchor platform
- Recessed anchor well with overboard drains
- Maxwell windlass with (2) foot button controls (in and out)
- Molded in fiberglass deck box
- (2) Dorade scoops
- 50-amp house shore power connection
- 50-amp air conditioning shore power connection
- 30-amp shore power connection

BOAT DECK:

The boat deck on the Nordhavn 50 is an excellent example of functionality and design. This expansive area is easily accessible via the cockpit ladder or the port side of the pilothouse, making it a convenient space for multiple purposes. The area is bordered by a durable stainless-steel railing that runs the perimeter, ensuring optimal safety and stability for everyone onboard. Additionally, the boat deck is equipped with a powerful Aritex crane, constructed of high-quality stainless steel, to deploy the Caribe tender easily. Overall, the boat deck of the Nordhavn 50 is a spacious and sophisticated area designed to provide a safe, functional, and aesthetically pleasing space for all boaters.

- Large deck box storage
- Aritex HSC-600S 1300 LB Hydraulic Crane
- Caribe DL-12 12' dinghy
- Stainless steel ladder with teak treads provides access from starboard side of cockpit

FLYBRIDGE:

Mabuhay's flybridge is an exceptional feature that offers amazing panoramic views of the surroundings. The skipper can comfortably control the vessel from a high vantage point with an ergonomic and adjustable Todd helm chair. Furthermore, the flybridge's overhead is fitted with a sturdy and durable Bimini top, providing ample shelter from the sun and weather elements. The flybridge of ***Mabuhay*** is not only an excellent location for steering, but it also offers an ideal space for socializing and entertaining guests. Thanks to an expansive layout, the flybridge is equipped with multiple seating options, which includes a U-shaped seating arrangement, so everyone onboard can enjoy the beautiful view and soak up the relaxing atmosphere. Overall, the flybridge of ***Mabuhay*** is a perfect blend of practicality and luxury, offering passengers a unique and unforgettable experience.

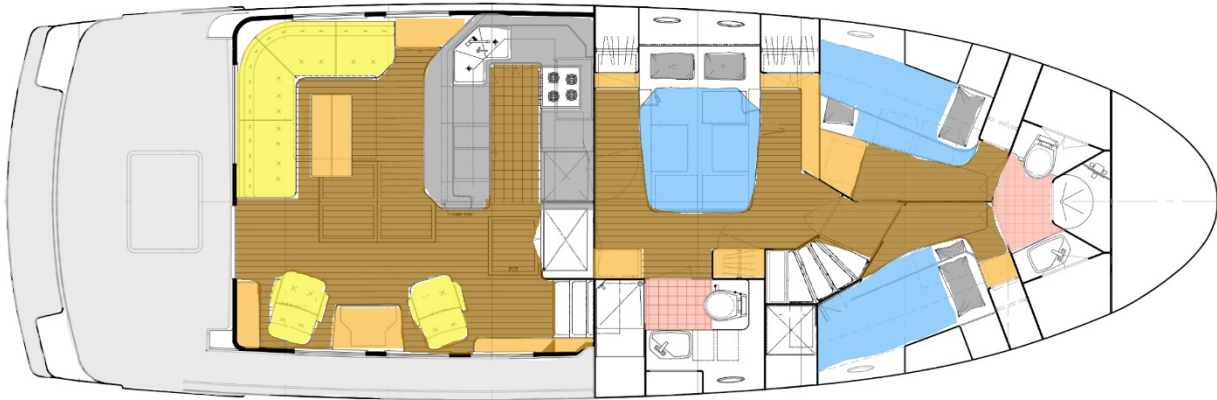
- Stainless steel destroyer wheel
- Luger main engine control panel
- Opening hatch to pilothouse
- Steering Station with MMC engine controls and engine instrumentation
- Furuno 15.6-Inch TZtouch2 MFD on flybridge
- Standard Horizon VHF with AIS and GPS (GX2200)
- ABT Bow Thruster control
- Side-Power Stern Thruster control
- Horn control
- Windlass controls

Nordhavn 50 *Mabuhay*

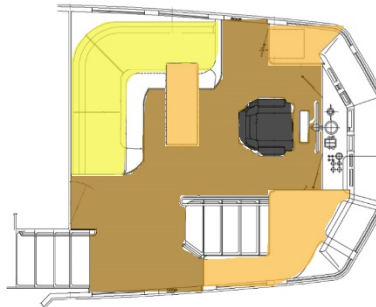
- Naiad stabilizer controls
- LED ACR searchlight controls
- AP-20 Autopilot control Head with Rudder Indicator
- Radar Arch (versus dry stack)
- Generous built-in seating
- Todd Helm chair with stainless steel pedestal
- 6" Round Lumitec LED dome lighting (blue and white options)
- Venturi wind screen
- Bimini – navy

LAYOUT – ARRANGEMENTS:

LAYOUT: Main and Lower Deck – Saloon, Galley Head and Staterooms



LAYOUT: Pilothouse



Nordhavn 50 *Mabuhay*

BROKER COMMENTS:

Mabuhay is an outstanding trawler that has arrived on the market with an array of stunning features and impressive equipment that justifies her high desirability. Her exceptional stability, range, and comfort make it stand out amongst other vessels. She also sports an impressive fuel capacity, making long-range cruises possible without worrying about stops for refueling. Further, **Mabuhay** boasts luxurious amenities along with a spacious interior and multiple deck areas for outdoor relaxation.

EXCLUSIONS:

Potential purchasers should assume that items on the vessel at the time of viewing, but not specifically listed on this sheet, are not included with the sale of the yacht. These specifications are believed to be true and correct but cannot be guaranteed. Items excluded include, but are not limited to; owner's personal first aid kit, iPad, paintings, books, personal items in lockers and drawers*, Scuba diving gear, fishing rods and reels, SUP and paddle, loose items in lazarette that are not boat specific, tools, decorations in staterooms, bedspreads, comforters, bed pillows, all towels, kitchen supplies (pots, pans, dishes, silverware), and binoculars. *Owner's personal effects and clothing will be removed prior to closing.

DISCLAIMER:

Specifications and details of this vessel are provided in good faith for informational purposes only. Details regarding the specifications, operating characteristics and condition of the vessel have been obtained from sources believed reliable, but the owner and brokers cannot guarantee or warrant the accuracy of this information or the condition of the vessel. Buyer assumes responsibility to verify all speeds, capacities, consumptions and other measurements contained herein and otherwise provided and agrees to instruct his/her agent or surveyor to confirm such details prior to purchase. Vessel is offered subject to prior sale, price and inventory changes and withdrawal from market without notice.

Brokerage: JMYS is a US based (licensed and bonded yacht brokerage in California, Florida and Washington) with an international emphasis specializing in ocean capable trawlers and recreational tugs. Our brokers are experienced boaters, most are trawler owner/operators with thousands of hours and miles at sea. The team at JMYS has extensive trawler and motor yacht product knowledge and our skills are available for coaching after the sale has concluded.

Co-Brokerage: Fellow yacht broker association members: This listing is available for co-brokerage and JMYS is a 50/50 house. Courtesy showings are available by appointment. Florida listings subject to appropriate broker licensing required by law.

This listing specification has been approved by the sellers for accuracy. The photos, images and descriptive content are copyrighted by JMYS and may not be copied or used without specific written permission



Nordhavn 50 Mabuhay

***Listing broker. Mark Pittman**, (Licensed Florida Yacht Broker) is a trawler specialist. All inspections are by appointment only. Please contact listing broker, **Mark Pittman** by phone, text, or email for additional information or to schedule your personal showing. Mark is always available via Mobile +1 803.320.3586 (call or text). You can send a detailed email to: Mark@JMYS.com



***Listing broker. John Hoffman**. John Hoffman has years of experience working with the Nordhavn brand over the years, having retired from his position as Nordhavn Commissioning Manager in 2015. John's product knowledge, systems skills and friendly, helpful attitude have helped him excel as a JMYS yacht broker. John has his yacht salesman license in Florida and is eager to work with many current clients and also looking forward to helping new buyers and sellers. Please contact listing broker John Hoffman for additional information or to schedule a viewing appointment. You can email John at John@JMYS.com or call/text +1 772.215.3720.

Brokerage: JMYS is a US based (licensed and bonded yacht brokerage in California, Florida and Washington) with an international emphasis specializing in ocean capable trawlers and recreational tugs. Our brokers are experienced boaters, most are trawler owner/operators with thousands of hours and miles at sea. We treat our clients with respect; we are responsive and not pushy. Our focus is to become your loyal advocate, always looking out for your best interests. The team at JMYS has extensive trawler, tug and motor yacht product knowledge and our skills are available for coaching after the sale has concluded.