

Nordhavn 55 Terrapin



JMYS

Jeff Merrill Yacht Sales, Inc. | www.JMYS.com
4153 Country Club Drive | Long Beach, CA 90807

Florida address: Jeff Merrill Yacht Sales, Inc. | 2650 W State Road 84, Suite 103 | Ft. Lauderdale, FL 33312



TERRAPIN

Price: \$1,150,000.00 Location: West Palm Beach, FL

Nordhavn 55 Terrapin

INTRODUCTION:

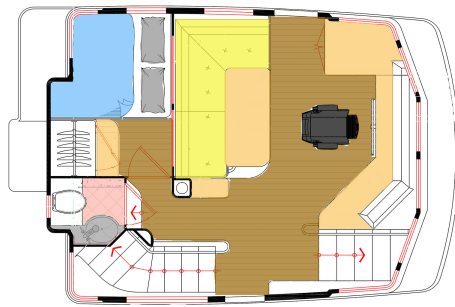
The Nordhavn 55 is one of the most popular trawlers ever conceived – an ideal cruising trawler that can be handled by a couple and capable of traveling to virtually unlimited destinations worldwide. **Terrapin** has a legacy of being one of the most active 55's. She started her cruising career in the Pacific Northwest, then took off south, through the Panama Canal and over to the US eastern seaboard. Her green painted hull is distinctive and instantly recognizable, turning heads in every port she enters.

For travel in coastal and offshore waters, she is powered by a continuous duty John Deere main engine with dry stack exhaust. Underway, she keeps on an even keel by her ABT TRAC active fin stabilizers. For marina positioning and maneuvering she has bow and stern thrusters. There is a wing engine for back up propulsion. Like many Nordhavns outfitted for extensive adventure, she has many comforts and luxuries as well as an assortment of redundant equipment including a vast collection of spare parts. **Terrapin** has travelled for thousands of miles, been well looked after and is ready to continue on.

Terrapin has the classic Nordhavn 55 layout with three heads and three staterooms; owner, guest and captain's. The owner's stateroom is conveniently positioned directly forward of the galley. The guest stateroom / office has the clever hinged bulkhead to convert to a large suite. Her entry level features a spacious saloon and galley with large windows outboard. The raised pilothouse includes the captain's cabin and head aft and affords a commanding view forward and on the sides. The outside decks are protected and one of her best features is the flybridge atop the pilothouse.

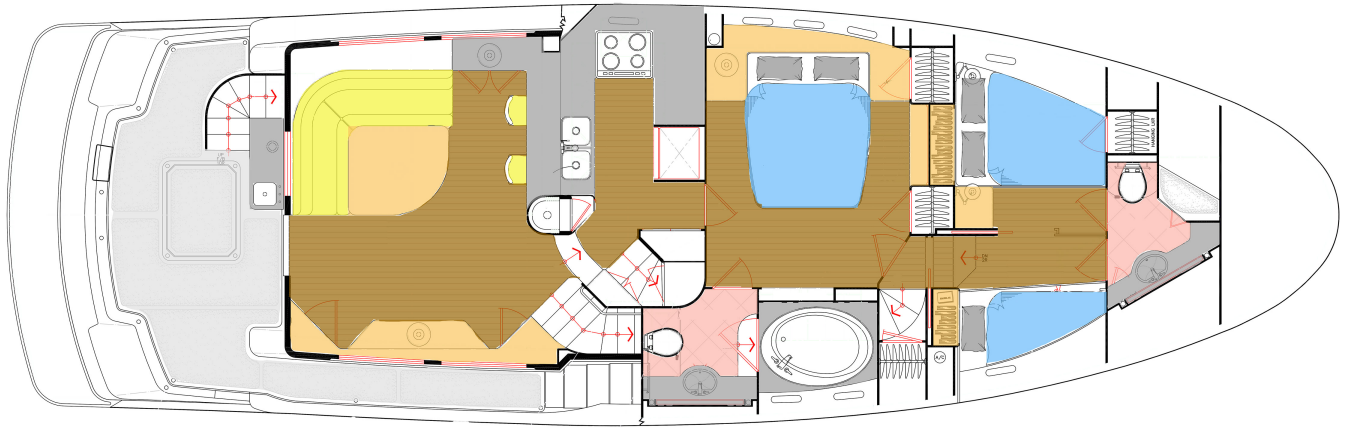
The interior on **Terrapin** is light and airy due to the white laminate panels in the staterooms (the same white with teak trim that is standard on every 55 and 60 utility room). The varnished teak is a nice compliment and the cabins feel much larger. Machinery is distributed through the lazarette, basement and standing height engine room. Great care has been invested in designing a vessel that is just as easy to service as she is to operate.

The photos, video and 360 tour will let you know what to expect, but **Terrapin** is much better to behold in person. Please get in touch if you are serious about an owner/operator long distance full displacement trawler.



LAYOUT: Upper deck -Pilothouse, Day Head and Captain's Cabin

Nordhavn 55 Terrapin



LAYOUT: Main deck – Saloon, Galley, Staterooms and Heads

| | |
|----------------------------|--|
| YACHT NAME: | TERRAPIN |
| BRAND AND MODEL: | NORDHAVN 55 (flybridge) |
| TYPE: | Long range passage maker with raised pilothouse |
| LOCATION: | West Palm Beach, FL |
| MODEL YEAR: | 2007 |
| HULL NUMBER: | 26 |
| HULL COLOR: | Linear polyurethane paint, Green |
| REGISTRY: | United States Coast Guard documented |
| DESIGNER: | Jeff Leishman |
| BUILDER: | P.A.E./South Coast – Xiamen, China |
| HULL MATERIAL: | Solid Fiberglass |
| DISPLACEMENT: | 124,500 lbs. 56.47 MT |
| BALLAST: | 8,500 lbs. 3.86 MT |
| RANGE: | 2,761 miles @ 8.5 knots |
| SPEED: | Cruise 8.5, Top 9.7 knots |
| LOA: | 61'0" 18.59M |
| LWL: | 50'1" 15.27M |
| BEAM: | 18'0" 5.49M |
| DRAFT: | Minimum 5'9" / 1.75M Maximum 6'6" / 1.98M |
| D L: | 370 |
| A B: | 2.47:1 |
| AIR DRAFT: | 37'0" 11.28M to top of antennas (est.) |
| MAIN ENGINE: | John Deere 6081AFM75 330 HP (Main hours: ~4,422) February, 2024 |
| TRANSMISSION | ZF 4:1 - Mathers controls |
| PROPELLER AND SHAFT | Aquamet 17 shaft Five blade propeller (42LH30) Spurs line cutter |

Nordhavn 55 Terrapin

| | |
|-------------------------------|---|
| EXHAUST: | Dry stack, keel cooled |
| WING ENGINE: | Lugger L984D 70 HP with V-drive and Gori propeller (Wing hours: ~64) February, 2024 |
| MACHINERY EQUIPMENT: | Dockmate controller remote for main engine and thrusters Oberdorfer oil change pump and manifold Isolation transformer Bauer Jr. dive compressor Walbro fuel transfer pump and Racor on timer |
| THRUSTERS: | Side-Power 24V / 15 HP Bow thruster and Stern Thruster |
| STABILIZATION: | ABT TRAC 250 digital active fins 9.5 square foot |
| ELECTRICAL: | 60 Hertz – US style - 50-amp service for house and air conditioning Glendinning Cablemaster shore cord retriever aft for 50 amp house Olsun 7.5 kVA power transformer SGS7.5HD-2-15-SS Olsun 12kVA isolation transformer GS12YY-0 |
| GENERATOR: | Northern Lights M844LW2 20 kW (Generator hours: ~5,111) February, 2024 |
| INVERTER CHARGER: | Magnum MagnaSine MS 2024 inverter / charger Mastervolt 100 amp charge master Nav com 12V charger |
| BATTERIES: | Fullriver AGM batteries for house and starting (most replaced, April 2023) |
| WATER MAKER: | Village Marine - PW 1200 SM (1,200 gallons a day) Dedicated intake through hull and strainer |
| CLIMATE CONTROL: | Cruisair Air Dometic air conditioning Webasto DBW 2010 diesel heater |
| WINDLASS: | Maxwell VWC 3500 electric |
| GROUND TACKLE: | Rocna 110 KG 400' 1/2" high test chain Secondary Fortress FX85 |
| CRANE: | Aritex 1,300 pound (painted white) |
| TENDER AND OUTBOARD: | Walker Bay Generation 400 DLX center console RIB (13') with Yamaha 50 HP outboard |
| NAV COM: | Furuno radars, displays, pilot, plotter Icom Simrad autopilot with Accusteer pump Peplink WiFi FLIR Nobeltec Admiral 9.2 TZ Touch flybridge Starlink |
| MONITORING: | Maretron CCTV Siren marine |
| ENTERTAINMENT: | 40" Sony TV Saloon on lift Bose speakers Sat TV dome Stereo XM-Sirius |
| STATEROOMS: | (3) Owner aft, Guest cabin forward, Captain's cabin aft of pilothouse |
| BEDDING: | HandCraft Mattress inner spring in staterooms |
| PLUMBING: | (2) Headhunter Mach5 freshwater pumps Torrid 40-gallon water heater |
| HEADS: | (3) Tecma Silence Plus (electric freshwater) |
| SHOWERS: | (3) Owner (tub), Guest, Cockpit shower |
| LAUNDRY: | Bosch AXXIS separate clothes washer and clothes dryer |
| GALLEY: | GE propane stove and electric oven GE dishwasher GE microwave convection oven Broan trash compactor GE top load freezer in Utility room |
| REFRIGERATION FREEZER: | Sub Zero refrigerator with two freezer drawers Chest freezer in Utility room |
| INTERIOR WOOD: | Teak in living areas White laminate with teak trim in Owner, Guest and Heads |
| INTERIOR COUNTERS: | Granite counters |

Nordhavn 55 Terrapin

| | |
|-----------------------------|---|
| INTERIOR UPHOLSTERY: | Ultraleather fabric |
| INTERIOR FLOORING: | Teak and spruce |
| TANKAGE: (approx.) | |
| FUEL: | 2,250 gallons 8,517L (4 fiberglass, 1 aluminum) |
| HOLDING BLACK: | 120 gallons 454L |
| HOLDING GRAY: | 110 gallons 416L |
| FRESH WATER: | 600 gallons 2,271L |
| SAFETY: | Sea Fire fire suppression engine room and lazarette Revere Offshore Commander 4-person life raft (expired) ACR EPIRB High water bilge pump Personal locator beacons Lifesling Ditch bag |
| | Note: All information is believed accurate but should be verified. |

ACCOMMODATIONS AND LAYOUT:

SWIM PLATFORM, COCKPIT AND SIDE DECK

You can get aboard *Terrapin* from the boarding gate along the covered starboard side deck or from the extended swim platform which leads to a centered cockpit door. The side deck connects the cockpit to the foredeck. The cockpit is a well-protected area with a forward console to port with built in sink, curved stairs to the boat deck above and a huge lazarette below. There is a hot/cold freshwater cockpit shower and stern docking station to starboard.

MAIN SALOON AND GALLEY:

The Dutch door entry from the saloon opens to reveal a pleasant and inviting saloon with seating a large table surrounded by warm teak wood. This is a great area for dining and relaxing. There is a 40" flat screen television built in to starboard, tucked below the counter when not in use. The windows provide a view that connects you with the outside.

The saloon merges into a well laid out and practical galley. There are plenty of overhead and under counter lockers and drawers for storing cooking necessities.

At the forward end of the saloon you ascend a flight of steps to arrive in the pilothouse or you can move forward to the Owner stateroom. There is also a stairway down that leads to the engine room via the utility room (which boasts a top load freezer and separate front-loading clothes washer and clothes dryer).

GALLEY, LAUNDRY AND PLUMBING FEATURES:

- Fresh water deck wash down at bow, stern, engine room and boat deck
- **Scandvik** cockpit shower
- **Tecma** fresh water electric toilets in heads
- Stainless steel sink
- **Grohe** faucet
- **Torrid** 40-gallon hot water heater
- **(2) Headhunter Mach 5** fresh water pumps – 110V
- **Village Marine PW1200** - 1,200 gallon per day water maker
- **GE** Profile convection microwave – outboard above stove
- **GE** 18" dishwasher
- **SubZero** 700TC refrigerator

© 2024 Jeff Merrill Yacht Sales, Inc. All Rights Reserved. www.JMYS.com

Nordhavn 55 Terrapin

- **SubZero** freezer drawers with icemaker
- 30" **GE Profile** gas cook top with four propane burners
- **GE** 240V electric oven
- **Broan** trash compactor with teak face
- Granite counter tops in galley and heads
- **Bosch** clothes washer and **Bosch** clothes dryer (both front loading)
- Pantry lockers and drawers
- **GE** top load deep freezer in utility room
- Counter top ice maker

OWNER STATEROOM:

The saloon connects forward to the galley, lowered by two steps to a fantastic single level layout that is one of the most significant features of the 55 design. The aft door entry from the galley to owner, when closed, let's crew move forward to the guest stateroom via the pilothouse, but during the day, most 55's enjoy keeping the stateroom level open for an easy walk through from the galley, forward to the guest stateroom head.

The white laminate in the owner stateroom creates an appealing and open space. The queen-sized berth is athwartship for convenience and comfort. There are bed stands forward and aft and behind the headboard are three opening portlights. Forward above the bureau is an opening hatch that was built in to the deck above which provides natural light and adds air flow when open – a big plus when at anchor.

The ensuite head is to starboard (completing this full beam owner stateroom). There is a mirror paneled door, tub/shower forward, medicine lockers and sink outboard and Tecma freshwater toilet aft.

INTERIOR ADDITIONAL EQUIPMENT:

- Custom window covers for windows and hatches
- Designer accent pieces throughout
- **Webasto** diesel heating system with vents in saloon, owner and guest stateroom
- **Cruisair** air conditioning system with remote compressors
- **Oceanaire** screen/shades on owner hatches
- 40" **Sony** flat screen TV on remote control lift in main salon
- **Bose** 123 AV system in saloon with DVD/CD player with tuner and two speakers with sub-woofer
- **Pioneer** stereo in pilothouse with XM input
- Custom bed mattresses in owner stateroom and guest stateroom

PILOTHOUSE:

The primary operations command center is the raised pilothouse aboard **Terrapin**. This is a large room for navigation with a bench seat and table behind the Stidd helm chair. Nordhavn is famous for ocean crossing and they understand how to arrange the ergonomics of helm, displays and instruments to optimize safe navigation. The visibility is exceptional.

The starboard side of the pilothouse has a stairway up from the entry deck and a separate stairway forward to the staterooms. You can also go outside to the Portuguese bridge deck through either port or starboard Dutch door.

The 55 design has two additional great features on the pilothouse deck. There is a captain's cabin aft to port and a toilet/sink head aft to starboard.

Nordhavn 55 Terrapin

The equipment selected will give you the ability to safely pilot in local waters or on long range, ocean crossing adventures.

Terrapin also has operations stations on the flybridge, starboard Portuguese bridge and cockpit and a Dockmate “portable” remote controller allowing command of the engine and thrusters from anywhere aboard.

NAVIGATION and COMMUNICATIONS ELECTRONICS, WHEELHOUSE FEATURES:

- **John Deere** main engine panel (includes separate **Murphy** gauge) with **MMC** controls
- **Lugger** wing engine panel with **Morse** controls
- Starburst pattern on pilothouse table
- **Furuno** 6 kW 4.5’ open array radar
- **Furuno** 3D 24” Radar dome (back up radar)
- **Furuno** sounder with depth transducer
- **Furuno** FD50 AIS
- **NMEA** 2000 backbone with color displays in pilothouse and OSR showing weather, speed, depth and water temperature
- **Maretron** USO ultra sonic wind and weather station on NMEA network
- Long range wireless Wi-Fi access for marinas
- **Simrad** AP25 auto-pilot with two stations and **Accusteer** HPU-I50 with soft shift pump
- **Furuno** NavPilot 700 with **Accusteer** HPU-212-200 pump
- **Icom** M-504 VHF radio with loud hailer function
- **Icom** M-506 VHF radio on flybridge
- **Icom** M-802 SSB radio
- Wireless cellular phone amplifier
- **FLIR** night vision
- **Nobeltec** chart software
- 30” stainless steel vertical destroyer wheel
- Electric horn
- Windshield wiper controls
- **Maxwell** windlass control
- **Sidepower** joy sticks for bow and stern thruster
- **Dockmate** wireless remote
- **Ritchie** compass
- **Stidd** helm chair
- **Village Marine** water maker control panel
- **Weems and Plath** Clock (inoperable)
- **Weems and Plath** Barometer (inoperable)
- **ABT TRAC** active fins stabilizer panel
- **MMC** electronic engine controls for main engine – pilothouse, flybridge, cockpit and starboard wing

GUEST STATEROOM:

The area below the foredeck is reserved for the guest stateroom. This area has a landing at the foot of the forward stairs from the pilothouse, just forward of the owner stateroom. Entering through a sliding pocket door you will appreciate the desk surface with swinging seat on the starboard side. The centerline bulkhead can be opened to for access to the bed to port, or can be closed to separate the

Nordhavn 55 Terrapin

office side from the stateroom. You can swing the forward portion of the centerline divider to starboard to open this area up into a more spacious suite.

Each section has a cabin door that connects to the forward head and shower. There is a built in sink with mirrored medicine cabinets above. A large stand-up shower with bifold door and Tecma fresh water toilet. Portlights outboard and hatches overhead provide natural lighting and ventilation.

WORKING AREAS:

BASEMENT:

One of the “hidden” areas on the Nordhavn 55 is below the guest stateroom, and this area is affectionately called the basement. There are four chambers. Forward the bow thruster is installed along with some discharge through hulls. The second chamber has shelves outboard with a battery on each providing electricity to the bow thruster and windlass. The third chamber has the access ladder to starboard and, to port, a practical shelf with work bench top (including vise) including built in drawers and lockers. The aftermost chamber is primarily the fresh water station. The water maker is to port, with membranes and other components mounted nearby. There are two manifolds, one for hot water, the other for cold water. To starboard the Torrid hot water tank, accumulator pressure tank and two fresh water pumps (one serving as back up).

UTILITY ROOM:

From the galley landing there is a short flight of curved stairs leading to the utility room which fronts the engine room. In the stairwell is a removable panel accessing the starboard stabilizer actuator. This is a convenient room with the Bosch Axxis clothes washer across from the Bosch Axxis clothes washer. There are lockers and drawers. Forward to center is a GE top load freezer. Outboard to port, behind the lower locker doors is access to the port stabilizer actuator.

ENGINE ROOM:

The engine room is entered through a Diamond Sea Glaze door with inspection window. The headroom forward is approximately 5’9” and tapers as you move aft, but gives you great access to the front and sides of the John Deere which is located on center stage. Immediately to starboard is the fuel supply tank which receives fuel from the four main fuel tanks. This tank serves as the source to supply fuel to the main engine and generator.

Along the starboard side is an impressive installation of fuel manifolds and filters – return and transfer manifolds, a transfer pump and Racor fuel filters. An Oberdorfer oil change pump is installed just forward of the SeaFire fire suppression.

Aft of the main engine transmission is the deep bilge area with Ultra senior bilge pump sensor and the sea chest raw water distribution. The Luger wing engine is to port and the Northern Lights generator is to starboard. Aft of the wing engine and generator is a door that opens to the lazarette.

LAZARETTE:

Below the large hatch in the cockpit is a cavernous machinery space. The batteries, select switches and fuses along with the inverter/charger are all located here. There are air conditioning compressors, the crane power pack and a SCUBA diver compressor. The steering console is centered, with autopilot pumps and steering rams, directly aft is the stern thruster. The equipment is serviceable and mounted outboard, which yields a large amount of space for “extras” like spare parts bins, etc.

HIGHLIGHTED FEATURES AND EQUIPMENT INCLUDED WITH TERRAPIN

© 2024 Jeff Merrill Yacht Sales, Inc. All Rights Reserved. www.JMYS.com

Nordhavn 55 Terrapin

MACHINERY AND FUEL SYSTEM FEATURES:

- **John Deere** 6081AFM75 main engine (keel cooled with dry stack exhaust) with a **ZF** transmission on a 4:1 reduction gear spinning a five-blade propeller
- **Spurs** line cutter on main and wing engine shaft
- **Lugger** L-984D 70 HP wing engine with folding **Gori** propeller and 10-gallon day tank
- **ABT Trac** #250 digital active fin stabilization
- **Sidepower** 24V electric bow thruster
- **Sidepower** 24V electric stern thruster
- **Cruisair** air conditioning with four zones– saloon, pilothouse, owner and guest stateroom. This system includes reverse cycle heating when warm air is desired.
- **SeaFire** fire suppression system for engine room and lazarette
- **Oberdorfer** oil changer for main, wing and generator

ELECTRICAL SYSTEM FEATURES:

- **Magnum MagnaSine** MS 2024 inverter / charger
- **Mastervolt** battery charger – 100amp
- **Northern Lights** 20 kW Generator
- AC electrical system includes galvanic isolator
- Shore power connections in cockpit and on foredeck
- (2) 50' 50-amp shore power cords
- **Fullriver** AGM batteries
- Lightning ground system
- **Glendinning** shore power cord system at stern
- Overhead lights with dimmers in saloon, pilothouse, owner stateroom
- SSB ground with dyna plate
- Inverter bypass breaker set up in lazarette

EXTERIOR:

There are five primary outside deck spaces.

The swim platform and cockpit are aft. There are safety rails on the swim platform and a boarding gate into the cockpit. The cockpit has a varnished teak cap rail, docking station aft to starboard and cockpit shower. There is a fiberglass console with a sink forward to port, next to the curved stairs that lead to the boat deck above. The lazarette is below the cockpit.

The starboard side deck is covered overhead along the saloon and connects the cockpit with the Portuguese bridge. There is a boarding gate for primary dock access as well as extra handrails and recessed hawse pipes with cleat horns.

Up a flight of steps from the side deck you walk on to the protected Portuguese bridge deck which wraps around the pilothouse. There is a recessed area with a opening hatch that feeds light and air to the owner stateroom below. A pantograph door is centered to connect with the foredeck. The ground tackle set up: anchor and chain, chain stopper, windlass and chain locker are forward. There is a shore power connection to starboard.

The Portuguese bridge connects aft along the port side to the boat deck. The boat deck can be reached up the curved stairs from the cockpit as well. Tall railing makes for safe moving about – on the subject of

Nordhavn 55 Terrapin

safety this is where you will find the life raft, EPIRB and Lifesling. The crane is centered and the ships tender and outboard are mounted on the starboard side.

The flybridge is up a few steps from the boat deck. The fiberglass mast conceals the dry stack exhaust for the main engine and has mounting planes for nav com antenna. There are two helm chairs forward with easy access to the helm and navigation displays. Behind the helm chairs is a fiberglass table with a bench seating area aft. A folding Bimini is easily set up to provide protection from the elements.

HULL, FOREDECK, COCKPIT AND FLYBRIDGE ADDITIONAL EQUIPMENT:

- **Maxwell 3500** electric windlass
- 400 feet 1/2" HT chain
- 110 KG **Rocna** anchor with swivel and chain stopper
- Foredeck wash down
- **Fortress FX85** spare anchor and chain and rope
- **Walker Bay** RIB 13' rigid inflatable with center console with cover
- **Yamaha** four stroke 50 HP outboard (skid pad on deck)
- Dinghy hull chocks and tie downs
- White mesh screens for windows
- Bimini top – stainless steel folding frame, **Sunbrella** cover
- (2) helm chairs on flybridge
- **Argonaut** navigation color monitor
- **TZT** navigation color monitor
- **Simrad** autopilot on flybridge
- **Furuno** autopilot on flybridge
- **ICOM** VHF radio
- Controls on flybridge for bow thruster, **ABT** stabilizers and windlass
- Flag halyards
- Chain stopper on primary anchor
- Starboard side docking station on Portuguese bridge and cockpit docking station; with engine and thruster controls, horn and windlass toggle
- Extended Swim platform
- Hot and cold fresh water shower
- Stern teak caprail - varnished
- Large teak ensign staff
- Fishing rod holders
- Stainless hand rails in numerous additional places on deck

SAFETY EQUIPMENT:

- **Revere** 4-man offshore life raft (expired)
- **ACR** EPIRB
- High water bilge pump
- **Lifesling**
- All USCG safety equipment

TERRAPIN – RECENT (2021 - 2024) UPGRADES, REPAIRS and IMPROVEMENTS

Engine room exhaust blanket replaced 2022

Dockmate controller – 2021

Nordhavn 55 Terrapin

Replace Bimini cover – 2021
Replace exhaust elbow on generator – 2021
Upgrade cell phone and Wi-Fi hot spots to Aigean and Pepwave – 2021
Phantom screen doors – saloon and pilothouse (port and starboard) – 2022
Siren Marine boat monitoring system – 2022
Airmar 220WX weather station – 2022
Flybridge VHF radio – 2022
Maretron MBB300C-01 vessel monitoring black box – 2022
Replace Accusteer steering pumps – 2022
Dripless shaft seal on wing engine – 2022
FLIR camera – 2023
Furuno TZT2BB – 2023
Starlink – 2023
Mach 5 back up fresh water pump – 2023
Furuno FA 70 AIS – 2023
Replace saloon air conditioning unit – 2023
Replace primary anchor chain – 2023
Replace house batteries - 2023

Nordhavn 55 *Terrapin* Talk Through Tour



https://www.youtube.com/watch?v=cpLaHJL_wRo



Nordhavn 55 Terrapin



BROKER COMMENTS:

Terrapin is in excellent condition. At the end of 2023 she completed her season in West Palm Beach, FL and the owners attended to a relatively short list of repairs and cleaning to have her ready to bring to market. It is important to note that when the current owners purchased her, they retained Steve D'Antonio for a thorough inspection and have complied with the majority of Steve's recommendations. Additionally, **Terrapin** enjoys the Vessel Vanguard monitoring system which is a fantastic tool for managing the care and service intervals aboard. On time oil changes and regular lab sample reports have assured the machinery on **Terrapin** is ready to go. The only left to say is that we welcome your visit by appointment so come see her for yourself!

EXCLUSIONS:

Potential purchasers should assume that items on the vessel at the time of viewing, but not specifically listed on this sheet, are not included with the sale of the yacht. These specifications are believed to be true and correct but cannot be guaranteed. Items excluded include, but are not limited to; paintings, books, personal items in lockers and drawers*, Scuba diving gear, fishing rods and reels, SUP and paddle, loose items in lazarette that are not boat specific, tools, decorations in staterooms, bedspreads, comforters, bed pillows, all towels, kitchen supplies (pots, pans, dishes, silverware), antique nautical items and binoculars. *Owner's personal effects and clothing will be removed prior to closing.

DISCLAIMER:

Specifications and details of this vessel are provided in good faith for informational purposes only. Details regarding the specifications, operating characteristics and condition of the vessel have been obtained from sources believed reliable, but the owner and brokers cannot guarantee or warrant the accuracy of this information or the condition of the vessel. Buyer assumes responsibility to verify all speeds, capacities, consumptions and other measurements contained herein and otherwise provided and agrees to instruct his/her agent or surveyor to confirm such details prior to purchase. Vessel is offered subject to prior sale, price and inventory changes and withdrawal from market without notice.

Brokerage: JMYS is a US based (licensed and bonded yacht brokerage in California, Florida and Washington) with an international emphasis specializing in ocean capable trawlers and recreational tugs. Our brokers are experienced boaters, most are trawler owner/operators with thousands of hours and miles at sea. The team at JMYS has extensive trawler and motor yacht product knowledge and our skills are available for coaching after the sale has concluded.

Co-Brokerage: Fellow yacht broker association members: This listing is available for co-brokerage and JMYS is a 50/50 house. Courtesy showings are available by appointment. Florida listings subject to appropriate broker licensing required by law.

Nordhavn 55 Terrapin

This listing specification has been approved by the sellers for accuracy. The photos, images and descriptive content are copyrighted by JMYS and may not be copied or used without specific written permission.

Listing broker. John Hoffman has years of experience working with the Nordhavn brand over the years, having retired from his position as Nordhavn Commissioning Manager in 2015. John's product knowledge, systems skills and friendly, helpful attitude have helped him excel as a JMYS yacht broker. John is a licensed Florida yacht salesman. Please contact listing broker John Hoffman for additional information or to schedule a viewing appointment. You can email John at John@JMYS.com or call/text +1 772.215.3720.



Listing broker. Jeff Merrill, CPYB (Certified Professional Yacht Broker) has extensive product knowledge of the trawler market plus direct experience with the Nordhavn brand (over two decades) and is very well acquainted with the Nordhavn 55. Jeff is a familiar face to YouTube viewers and a regular presenter at TrawlerFest. He writes about trawlers for *Ocean Navigator* and *PassageMaker* magazines and is one of the online instructors for *Boaters University*. Please contact listing broker, **Jeff Merrill, CPYB** by phone, text or email for additional information or to schedule your personal showing. Jeff is available via Mobile + 1 949.355.4950 (call or text). You can send a detailed Email to: Jeff@JMYS.com.



Licensed and Bonded in California, Florida, Virginia and Washington.

Skype: jeff.merrill | You Tube: Jeff Merrill Yachts | Twitter: @jmys_trawlers | LinkedIn: jeff.merrill

Facebook: Jeff Merrill Yacht Sales | Instagram: JMYS_Trawlers

Chairman, Certification Advisory Council (CAC) for CPYB 2023 and 2024

Yacht Brokers Association of America | International Yacht Brokers Association (Florida) | Northwest

Yacht Brokers Association | California Yacht Brokers Association – President 2015 and 2016

